

<b>RIGHT-OF-WAY</b> TRACT NUMBERS	OH-LO-012.0000 18.7 RODS 309 FT.	OH-LO-013.0000 40.1 RODS 661 FT.	OH-LO-015.0000 32.5 RODS 536 FT.	OH-LO-016.0000 19.2 RODS 316 FT.	OH-LO-018.0000 139.3 RODS 2298 FT.	OH-LO-019.0000 50.5 RODS 834 FT.	OH-LO-020.0000 2.7 RODS 45 FT.		
<b>SURVEY DATA</b> SURVEY COMPANY: FIELD BOOK: PAGES:	STA. 4350+30 PI. = 4350+30 RT STA. 4350+43 TOWER 30 FT LEFT	STA. 4352+41 PI. = 4352+41 RT	STA. 4355+21 TOP BANK STA. 4355+41 DRAIN DEPTH 0 STA. 4355+51 TOP BANK STA. 4355+61 TOP BANK STA. 4355+71 TOP BANK STA. 4355+81 TOP BANK STA. 4355+91 TOP BANK STA. 4356+01 PAVED SH183 CENTERLINE STA. 4356+16 ROAD EDGE STA. 4356+36 DITCH DEPTH 0 FT. CENTERLINE STA. 4356+45 TOP BANK STA. 4356+55 TOP BANK STA. 4356+65 TOP BANK STA. 4356+75 TOP BANK STA. 4356+85 TOP BANK STA. 4356+95 TOP BANK STA. 4357+05 FENCE	STA. 4358+01 FENCE	STA. 4361+45 PIPELINE (SCALED)	STA. 4374+52 PIPELINE (SCALED)	STA. 4382+64 PI. = 2978+943 RT	STA. 4388+01 PI. = 2978+943 RT STA. 4388+11 PIPELINE (SCALED)	STA. 4400+08 FENCE

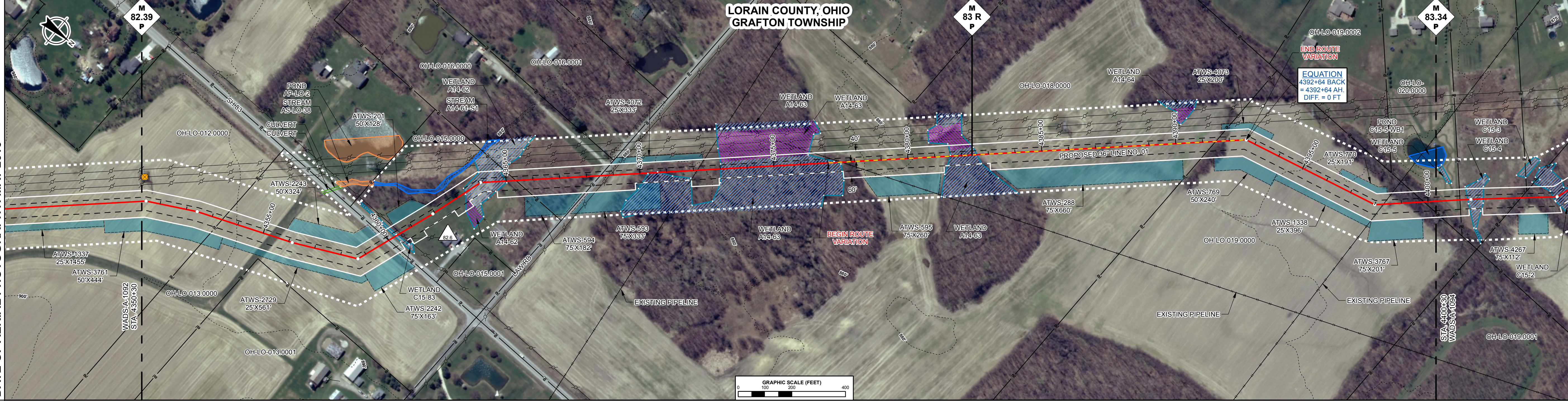
<b>CLASS LOCATION</b>	CLASS 2
<b>PIPE MATERIAL</b>	PROJ. MOD. NUMBER: 82.6 DESCRIPTION: ATWS/TWS ADJUSTED TO REDUCE RESIDENTIAL IMPACTS.

**ALIGNMENT LEGEND**

PIPELINE MILEPOST  
PROPOSED NEXUS PIPELINE - NOV. 2015 ROUTE  
PROPOSED NEXUS PIPELINE  
INTERCONNECTING PIPELINE TO TGP  
CONSTRUCTION LIMIT  
STUDY CORRIDOR  
STAGING AREA  
WAREYARD  
PERMANENT ROW  
ADDITIONAL TEMPORARY WORKSPACE  
METERING & REGULATION STATION (M&R) SITE  
COMPRESSOR STATION SITE  
FACILITIES TEMPORARY WORKSPACE  
FACILITIES PERMANENT WORKSPACE  
AGRICULTURAL PEM WETLAND BOUNDARY  
DELINEATED WETLAND BOUNDARY  
DELINEATED WATERBODY BANK  
DELINEATED WATERBODY CENTERLINE  
APPROXIMATE WETLAND BOUNDARY  
APPROXIMATE WATERBODY CENTERLINE  
PERMANENT ACCESS ROAD  
TEMPORARY ACCESS ROAD  
PROPERTY LINE  
CONTOUR  
MUNICIPALITY LINE  
FENCE  
FOREIGN PIPELINE  
POWERLINE  
WATER PIPELINE  
RAILROAD TRACK  
TELEPHONE LINE  
TEE TAP  
BLOW OFF VALVE  
TOWER  
HORIZONTAL DIRECTIONAL DRILL ENTRY/EXIT  
TANK  
WELL: GAS WATER OIL UNKNOWN

UTILITY LINES  
MAINLINE VALVE (MLV)  
MICROWAVE TOWER

**DATE OF AERIAL PHOTOGRAPHY: MAY 2015**

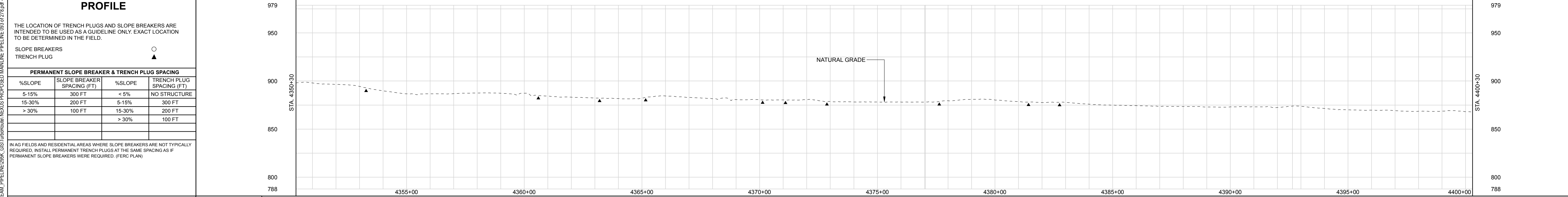


**ENVIRONMENTAL DATA**

STA. 4380+16 WETLAND C15-83 STA. 4380+51 WETLAND C15-83 EXIT	STA. 4383+00 WETLAND A14-62 ENTER	STA. 4385+03 WETLAND A14-62 EXIT	STA. 4389+21 WETLAND A14-63 ENTER	STA. 4371+88 WETLAND A14-63 EXIT	STA. 4372+89 WETLAND A14-63 ENTER	STA. 4374+54 WETLAND A14-63 EXIT	STA. 4381+46 WETLAND A14-63 ENTER	STA. 4382+74 WETLAND A14-63 EXIT
--	--------------------------------------	-------------------------------------	--------------------------------------	-------------------------------------	--------------------------------------	-------------------------------------	--------------------------------------	-------------------------------------

**E & S TYPICALS**

E&S TYPICALS WILL BE USED AS A PLAN AND WILL HAVE FURTHER INPUT FROM ENVIRONMENTAL INSPECTOR.



<b>LAND USE CLASSIFICATION</b>	<b>SOILS</b>
AG AGRICULTURAL OL OPEN LAND IC INDUSTRIAL/COMMERCIAL FW FOREST/WOODLAND R RESIDENTIAL OW OPEN WATER	<b>LAND USE</b> AG OL AG OL IC OL FW IC AG FW AG FW AG FW
<b>% SLOPE</b>	<5% 5-15% <5% 5-15% <5%

<b>GENERAL NOTES:</b> 1.) ALL STATIONING IS IN U.S. FEET. 2.) CONTOUR LINES AND ELEVATIONS ARE IN U.S. FEET.	<b>ENGINEERING APPROVALS</b>		<b>WADS - CLYD NEXUS PROJECT PROPOSED 36" LINE NO. 01 ALIGNMENT SHEET</b>			
	DRAWN BY: NAME	BID SIGNATURE	CONSTRUCTION DATE	SIGNATURE		DATE
	YEAR: 2017		W.B.S.	Scale 1" = 200'		WADS-A-1093
<b>REV</b> DSN CK DESCRIPTION REVISIONS	<b>ITEM</b> DESCRIPTION MATERIALS	<b>QTY</b>	<b>WADS - CLYD NEXUS PROJECT PROPOSED 36" LINE NO. 01 ALIGNMENT SHEET</b> LOC. LORAIN COUNTY, OHIO YEAR: 2017 W.B.S. Scale 1" = 200' WADS-A-1093 REV. 3			

P:\2016\UPSTREAM PIPELINE\2016\NEXUS PROPOSED MAINLINE PIPELINE\08272016\2016-06-04 15:38:04



<b>RIGHT-OF-WAY</b> TRACT NUMBERS	OH-LO-020.0000 5.4 RODS 89 FT.	OH-LO-021.0000 13.8 RODS 228 FT.	OH-LO-022.0000 84.1 RODS 1388 FT.	OH-LO-023.0000 37.0 RODS 610 FT.	OH-LO-024.0000 42.4 RODS 700 FT.	OH-LO-026.0000 120.4 RODS 1866 FT.	4450+31				
<b>SURVEY DATA</b> SURVEY COMPANY: FIELD BOOK: PAGES:	STA. 4401+461 PI.-1'30"24" RT	STA. 4401+38 FENCE	STA. 4404+62 PI.-29'59"21" LT	STA. 4416+42 PI.-89'57"32" LT STA. 4417+17 POWERLINE STA. 4417+36 FENCE STA. 4417+48 POWERLINE VERT. CLEARANCE 50 FT (SCALED)	STA. 4419+92 PI.-18'5"30" RT	STA. 4425+44 PI.-3'48"28" LT STA. 4427+22 UNDERGROUND SAN SEWER STA. 4430+16 TOP BANK 4430+24 DITCH DEPTH 0 STA. 4430+33 TOP BANK STA. 4430+34 ROAD EDGE STA. 4430+34 ROAD EDGE STA. 4430+34 ROAD EDGE CENTERLINE STA. 4430+54 ROAD EDGE 4430+62 DITCH DEPTH 0 FT. CENTERLINE STA. 4430+72 TOP BANK 4430+80 DITCH DEPTH 0 VERT. CLEARANCE 16 FT (SCALED)	STA. 4442+32 PI.-30'32"47" RT	STA. 4450+09 FENCE			
<b>CLASS LOCATION</b>	CLASS 2					CLASS 1					
<b>PIPE MATERIAL</b>	<table border="1"> <tr> <th>PROJ. MOD. NUMBER</th> <th>DESCRIPTION</th> </tr> <tr> <td>83.5</td> <td>ATWS/TWS AND RESOURCES UPDATED BASED ON WETLAND FIELD SURVEY.</td> </tr> </table>							PROJ. MOD. NUMBER	DESCRIPTION	83.5	ATWS/TWS AND RESOURCES UPDATED BASED ON WETLAND FIELD SURVEY.
PROJ. MOD. NUMBER	DESCRIPTION										
83.5	ATWS/TWS AND RESOURCES UPDATED BASED ON WETLAND FIELD SURVEY.										

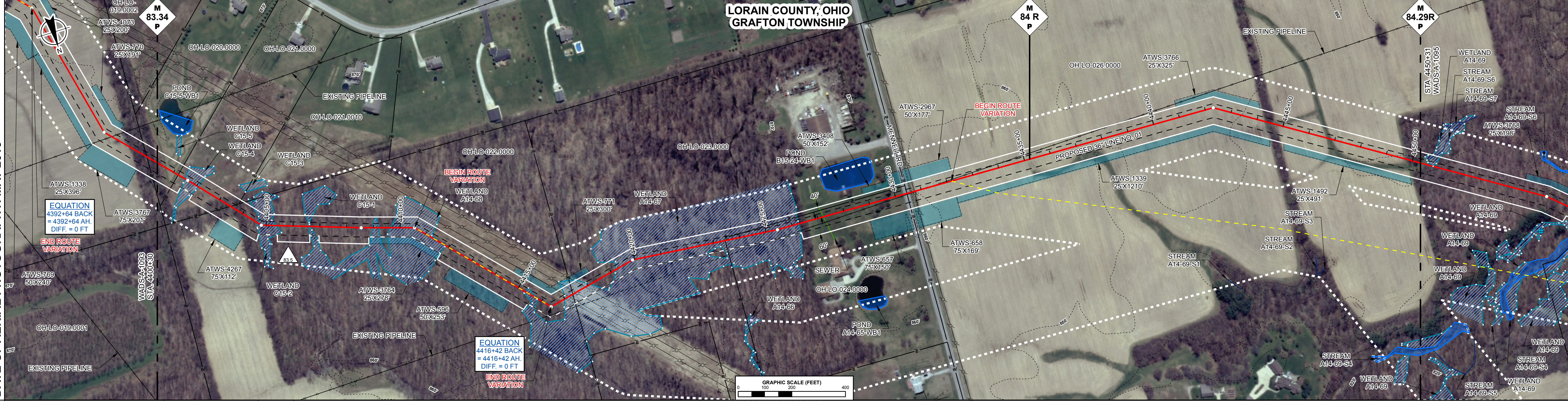
**ALIGNMENT LEGEND**

PIPELINE MILEPOST  
PROPOSED NEXUS PIPELINE - NOV. 2015 ROUTE  
PROPOSED NEXUS PIPELINE  
INTERCONNECTING PIPELINE TO TGP  
CONSTRUCTION LIMIT  
STUDY CORRIDOR  
STAGING AREA  
WAREYARD  
PERMANENT ROW  
ADDITIONAL TEMPORARY WORKSPACE  
METERING & REGULATION STATION (M&R) SITE  
COMPRESSOR STATION SITE  
FACILITIES TEMPORARY WORKSPACE  
FACILITIES PERMANENT WORKSPACE  
AGRICULTURAL PEM WETLAND BOUNDARY  
DELINEATED WETLAND BOUNDARY  
DELINEATED WATERBODY BANK  
DELINEATED WATERBODY CENTERLINE  
APPROXIMATE WETLAND BOUNDARY  
APPROXIMATE WATERBODY BANK  
APPROXIMATE WATERBODY CENTERLINE  
PERMANENT ACCESS ROAD  
TEMPORARY ACCESS ROAD

PROPERTY LINE  
CONTOUR  
MUNICIPALITY LINE  
FENCE  
FOREIGN PIPELINE  
POWERLINE  
WATER PIPELINE  
RAILROAD TRACK  
TELEPHONE LINE  
TEE TAP  
BLOW OFF VALVE  
TOWER  
HORIZONTAL DIRECTIONAL DRILL ENTRY/EXIT  
TANK  
WELL: GAS WATER OIL UNKNOWN

UTILITY LINES  
MAINLINE VALVE (MLV)  
MICROWAVE TOWER

DATE OF AERIAL PHOTOGRAPHY: MAY 2015



**ENVIRONMENTAL DATA**

STA. 4401+43 WETLAND C16-4 ENTER	STA. 4402+08 WETLAND C16-4 EXIT	STA. 4405+68 WETLAND C16-2 EXIT	STA. 4405+68 WETLAND C16-2 ENTER	STA. 4406+65 WETLAND C16-1 EXIT	STA. 4406+65 WETLAND C16-1 ENTER	STA. 4408+81 WETLAND A14-88 ENTER	STA. 4409+25 WETLAND A14-88 EXIT	STA. 4409+53 WETLAND A14-88 ENTER	STA. 4411+86 WETLAND A14-88 EXIT	STA. 4415+30 WETLAND A14-87 ENTER	STA. 4415+30 WETLAND A14-87 EXIT	STA. 4416+79 WETLAND A14-87 ENTER	STA. 4416+79 WETLAND A14-87 EXIT	STA. 4418+42 WETLAND A14-87 ENTER	STA. 4418+86 WETLAND A14-87 ENTER	STA. 4426+27 WETLAND A14-87 EXIT
-------------------------------------	------------------------------------	------------------------------------	-------------------------------------	------------------------------------	-------------------------------------	--------------------------------------	-------------------------------------	--------------------------------------	-------------------------------------	--------------------------------------	-------------------------------------	--------------------------------------	-------------------------------------	--------------------------------------	--------------------------------------	-------------------------------------

**E & S TYPICALS**

E&S TYPICALS WILL BE USED AS A PLAN AND WILL HAVE FURTHER INPUT FROM ENVIRONMENTAL INSPECTOR.

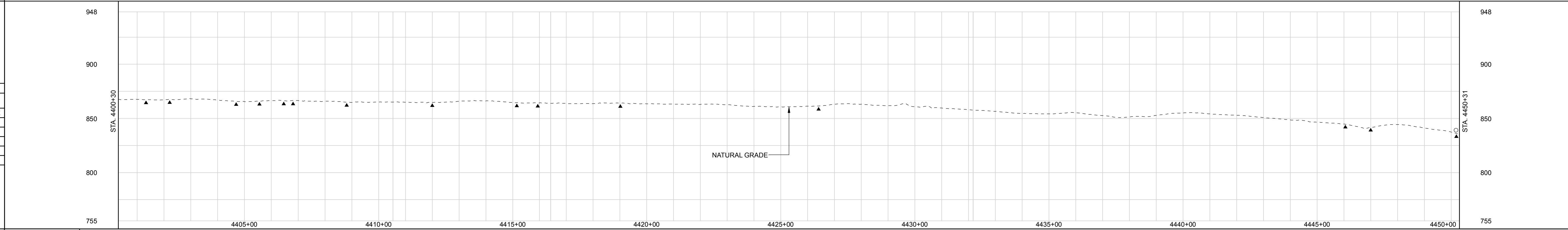
**PROFILE**

THE LOCATION OF TRENCH PLUGS AND SLOPE BREAKERS ARE INTENDED TO BE USED AS A GUIDELINE ONLY. EXACT LOCATION TO BE DETERMINED IN THE FIELD.

SLOPE BREAKERS  
TRENCH PLUG

PERMANENT SLOPE BREAKER & TRENCH PLUG SPACING			
%SLOPE	SLOPE BREAKER SPACING (FT)	%SLOPE	TRENCH PLUG SPACING (FT)
5-15%	300 FT	< 5%	NO STRUCTURE
15-30%	200 FT	5-15%	300 FT
> 30%	100 FT	15-30%	200 FT
		> 30%	100 FT

IN AG FIELDS AND RESIDENTIAL AREAS WHERE SLOPE BREAKERS ARE NOT TYPICALLY REQUIRED, INSTALL PERMANENT TRENCH PLUGS AT THE SAME SPACING AS IF PERMANENT SLOPE BREAKERS WERE REQUIRED. (FERC PLAN)



**LAND USE CLASSIFICATION**

AG AGRICULTURAL	OL OPEN LAND	IC INDUSTRIAL/COMMERCIAL
FW FOREST/WOODLAND	R RESIDENTIAL	OW OPEN WATER

**SOILS**

LAND USE	FW	OL	IC	OW
% SLOPE		<5%	5-15% <5% 5-15%	<5%

<b>GENERAL NOTES:</b> 1.) ALL STATIONING IS IN U.S. FEET. 2.) CONTOUR LINES AND ELEVATIONS ARE IN U.S. FEET.	<b>ENGINEERING APPROVALS</b>		<b>WADS - CLYD NEXUS PROJECT PROPOSED 36" LINE NO. 01 ALIGNMENT SHEET</b>			
	DRAWN BY: NAME	BID SIGNATURE	CONSTRUCTION DATE	SIGNATURE DATE		
	LOC. LORAIN COUNTY, OHIO					
DWG. NO. REFERENCE DRAWINGS	REV DSN CK DESCRIPTION REVISIONS	ITEM DESCRIPTION MATERIALS	QTY	YEAR: 2017 W.B.S.	Scale 1" = 200' WADS-A-1094	REV. 3







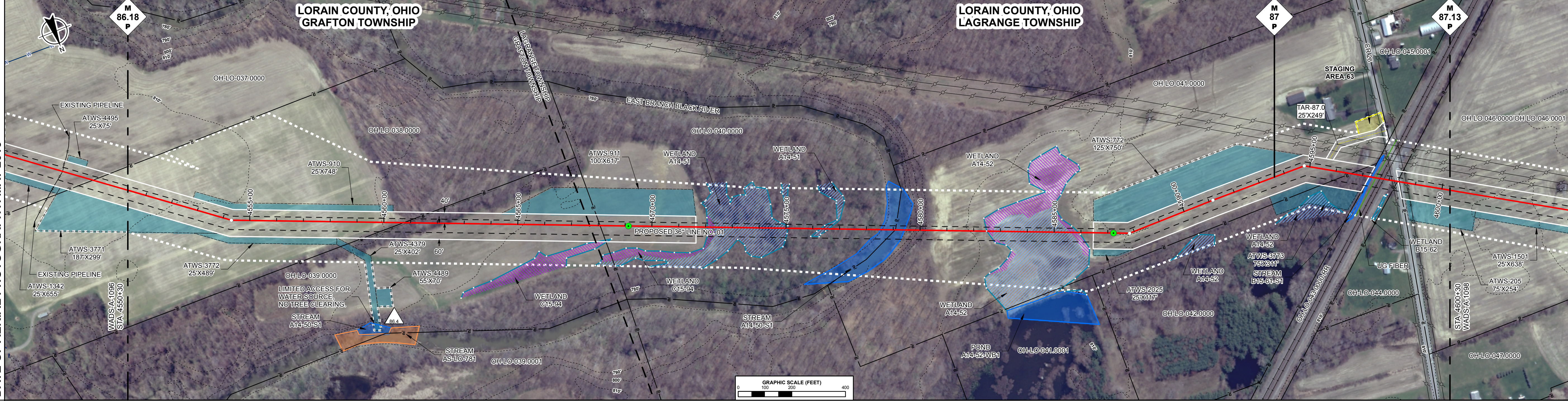
<b>RIGHT-OF-WAY</b> TRACT NUMBERS	4550+30	OH-LO-038.0000 63.3 RODS 1044 FT.	4560+71	OH-LO-039.0000 44.4 RODS 733 FT.	4568+07	OH-LO-040.0000 66.7 RODS 1101 FT.	4579+08	OH-LO-041.0000 105.8 RODS 1746 FT.	4595+54	OH-LO-042.0000 4.4 RODS 72 FT.	OH-LO-043.0000-RR 4597+26 6.4 RODS 106 FT.	OH-LO-044.0000 4598+32 0.4 RODS 7 FT.	OH-LO-046.0000/OH-LO-046.0001 4598+32 11.6 RODS 191 FT.	4600+30
<b>SURVEY DATA</b> SURVEY COMPANY: FIELD BOOK: PAGES:	STA. 4554+32 PI - 181735° LT STA. 4560+90 FENCE STA. 4567+68 MUNICIPALITY LINE STA. 4568+13 HDD EXIT STA. 4579+08 TOP BANK STA. 4587+21 HDD ENTRY STA. 4587+81 PI - 22300° LT STA. 4591+16 PI - 17831° RT STA. 4594+79 PI - 30000° RT STA. 4595+78 ROAD EDGE STA. 4597+23 TOP BANK STA. 4597+26 CENTERLINE STA. 4597+32 TOP BANK STA. 4597+43 RAILROAD TOP STA. 4597+50 UNDERGROUND FIBER STA. 4597+66 RAILROAD CENTERLINE STA. 4598+00 RAILROAD TOP STA. 4598+11 POWERLINE TOE STA. 4598+18 TOP BANK STA. 4598+25 ROAD EDGE STA. 4598+38 PAVED CR 26 CENTERLINE STA. 4598+42 TOE BANK STA. 4598+43 TOP BANK STA. 4598+45 TOE BANK STA. 4598+46 FENCE STA. 4598+49 FENCE													

<b>CLASS LOCATION</b>	CLASS 1	
<b>PIPE MATERIAL</b>	PROJ. MOD. NUMBER: 86.4	DESCRIPTION: RESOURCE UPDATED BASED ON WATERBODY FIELD SURVEY

**ALIGNMENT LEGEND**

- PIPELINE MILEPOST
- PROPOSED NEXUS PIPELINE - NOV. 2015 ROUTE
- PROPOSED NEXUS PIPELINE
- INTERCONNECTING PIPELINE TO TGP
- CONSTRUCTION LIMIT
- STUDY CORRIDOR
- STAGING AREA
- WAREYARD
- PERMANENT ROW
- ADDITIONAL TEMPORARY WORKSPACE
- METERING & REGULATION STATION (M&R) SITE
- COMPRESSOR STATION SITE
- FACILITIES TEMPORARY WORKSPACE
- FACILITIES PERMANENT WORKSPACE
- AGRICULTURAL PEM WETLAND BOUNDARY
- DELINEATED WETLAND BOUNDARY
- DELINEATED WATERBODY BANK
- DELINEATED WATERBODY CENTERLINE
- APPROXIMATE WETLAND BOUNDARY
- APPROXIMATE WATERBODY BANK
- APPROXIMATE WATERBODY CENTERLINE
- PERMANENT ACCESS ROAD
- TEMPORARY ACCESS ROAD
- PROPERTY LINE
- CONTOUR
- MUNICIPALITY LINE
- FENCE
- FOREIGN PIPELINE
- POWERLINE
- WATER PIPELINE
- RAILROAD TRACK
- TELEPHONE LINE
- TEE TAP
- BLOW OFF VALVE
- TOWER
- HORIZONTAL DIRECTIONAL DRILL ENTRY/EXIT
- TANK
- WELL: GAS, WATER, OIL, UNKNOWN
- UTILITY LINES
- MAINLINE VALVE (MLV)
- MICROWAVE TOWER

**DATE OF AERIAL PHOTOGRAPHY: MAY 2015**



**ENVIRONMENTAL DATA**

STA. 4559+07 STREAM EAST BRANCH BLACK RIVER A14-50-S1 ENTER	STA. 4559+08 STREAM EAST BRANCH BLACK RIVER A14-50-S1 EXIT	STA. 4567+66 WETLAND C15-94 ENTER	STA. 4568+50 WETLAND C15-94 EXIT	STA. 4572+06 WETLAND A14-51 ENTER	STA. 4575+07 WETLAND A14-51 EXIT	STA. 4575+83 WETLAND A14-51 ENTER	STA. 4576+76 WETLAND A14-51 EXIT	STA. 4578+16 STREAM EAST BRANCH BLACK RIVER A14-50-S1 ENTER	STA. 4579+47 STREAM EAST BRANCH BLACK RIVER A14-50-S1 EXIT	STA. 4582+45 WETLAND A14-52 ENTER	STA. 4586+17 WETLAND A14-52 EXIT	STA. 4594+12 WETLAND A14-52 ENTER	STA. 4596+26 WETLAND A14-52 EXIT	STA. 4597+41 STREAM TRIBUTARY TO FINNEGAN DITCH B15-61-S1 ENTER	STA. 4597+41 STREAM TRIBUTARY TO FINNEGAN DITCH B15-61-S1 EXIT
---	--	-----------------------------------	----------------------------------	-----------------------------------	----------------------------------	-----------------------------------	----------------------------------	---	--	-----------------------------------	----------------------------------	-----------------------------------	----------------------------------	---	--

**E & S TYPICALS**

E&S TYPICALS WILL BE USED AS A PLAN AND WILL HAVE FURTHER INPUT FROM ENVIRONMENTAL INSPECTOR.

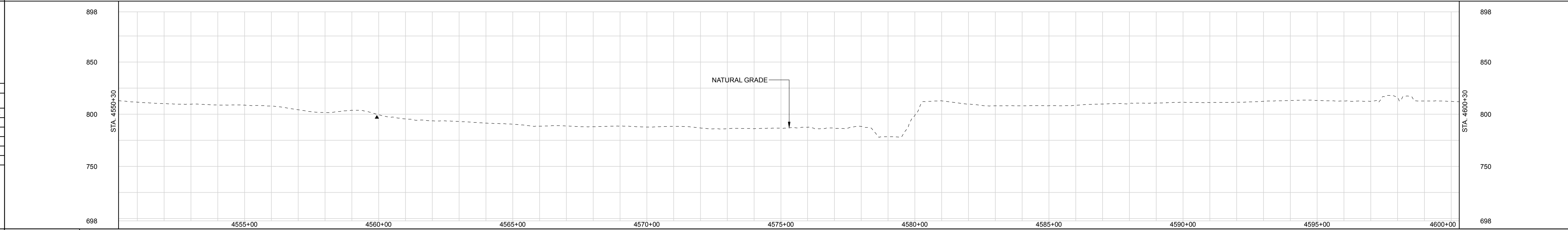
**PROFILE**

THE LOCATION OF TRENCH PLUGS AND SLOPE BREAKERS ARE INTENDED TO BE USED AS A GUIDELINE ONLY. EXACT LOCATION TO BE DETERMINED IN THE FIELD.

SLOPE BREAKERS  
TRENCH PLUG

PERMANENT SLOPE BREAKER & TRENCH PLUG SPACING			
%SLOPE	SLOPE BREAKER SPACING (FT)	%SLOPE	TRENCH PLUG SPACING (FT)
5-15%	300 FT	< 5%	NO STRUCTURE
15-30%	200 FT	5-15%	300 FT
> 30%	100 FT	15-30%	200 FT
		> 30%	100 FT

IN AG FIELDS AND RESIDENTIAL AREAS WHERE SLOPE BREAKERS ARE NOT TYPICALLY REQUIRED, INSTALL PERMANENT TRENCH PLUGS AT THE SAME SPACING AS IF PERMANENT SLOPE BREAKERS WERE REQUIRED. (FERC PLAN)



<b>LAND USE CLASSIFICATION</b>	<b>SOILS</b>	
AG AGRICULTURAL OL OPEN LAND IC INDUSTRIAL/COMMERCIAL FV FOREST/WOODLAND R RESIDENTIAL OW OPEN WATER	LAND USE % SLOPE	AG FV AG OL FV OW AG OL AG FV OW OL IC R AG

<b>GENERAL NOTES:</b> 1.) ALL STATIONING IS IN U.S. FEET. 2.) CONTOUR LINES AND ELEVATIONS ARE IN U.S. FEET.	<b>ENGINEERING APPROVALS</b> DRAWN BY: _____ NAME SIGNATURE DATE SIGNATURE DATE		<b>WADS - CLYD NEXUS PROJECT</b> PROPOSED 36" LINE NO. 01 ALIGNMENT SHEET LOC. LORAIN COUNTY, OHIO YEAR: 2017 W.B.S. Scale 1" = 200' WADS-A-1097 REV. 3	
	<b>ISSUED FOR FERC (08/2016)</b> <b>ISSUED FOR P3 (03/2016)</b> <b>ISSUED FOR FERC (02/2016)</b> <b>ISSUED FOR FERC FILING (11/2015)</b> <b>ISSUED FOR FERC FILING (11/2015)</b> <b>ISSUED FOR FERC FILING (11/2015)</b>			
	<b>REV DSN CK</b> 3 2 1 0A 0	<b>DESCRIPTION REVISIONS</b> _____ _____ _____ _____	<b>ITEM</b> _____ _____ _____	<b>DESCRIPTION MATERIALS</b> _____ _____ _____

P:\2016\UPSTREAM\PIPELINE\2016\GIS\TDR\WADS\NEXUS\PROPOSED\MAINLINE\PIPELINE\017\278.pbf - PLOT TIME: 2016-06-06 14:57:43



<b>RIGHT-OF-WAY</b> TRACT NUMBERS	OH-LO-058.0000 29.1 RODS 480 FT.	OH-LO-059.0000 42.4 RODS 700 FT.	OH-LO-062.0000 165.0 RODS 2722 FT.	OH-LO-063.0000 65.9 RODS 1087 FT.	
<b>SURVEY DATA</b> SURVEY COMPANY: FIELD BOOK: PAGES:	STA. 4704+16 GAS PL STA. 4704+62 GAS PL	STA. 4707+97 PL - 3" 97" LI	STA. 4711+82 POWERLINE VERT. CLEARANCE 15 FT STA. 4711+97 ROAD DEPTH 0 FT CENTERLINE STA. 4711+97 ROAD EDGE STA. 4712+12 PAVED, SH 301 STA. 4712+38 ROAD EDGE STA. 4712+38 ROAD DEPTH 0 FT CENTERLINE STA. 4712+38 DITCH, DEPTH 0 FT CENTERLINE STA. 4713+03 MLV07 VERT. CLEARANCE 25 FT	STA. 4715+48 TOP BANK STA. 4715+68 TOE BANK STA. 4715+68 TOE BANK STA. 4715+82 TOP BANK	STA. 4723+67 PIPELINE (SCALED) STA. 4729+16 PL - 18" 50" RT STA. 4739+31 FENCE STA. 4749+63 PL - 10" 13" LT STA. 4750+20 PL - 15" 3" RT

<b>CLASS LOCATION</b>	CLASS 1
-----------------------	---------

<b>PIPE MATERIAL</b>	<table border="1"> <tr> <th>PROJ. MOD. NUMBER</th> <th>DESCRIPTION</th> </tr> <tr> <td>89.2</td> <td>ATWS ADJUSTED TO REDUCE RESIDENTIAL IMPACTS.</td> </tr> </table>	PROJ. MOD. NUMBER	DESCRIPTION	89.2	ATWS ADJUSTED TO REDUCE RESIDENTIAL IMPACTS.
PROJ. MOD. NUMBER	DESCRIPTION				
89.2	ATWS ADJUSTED TO REDUCE RESIDENTIAL IMPACTS.				

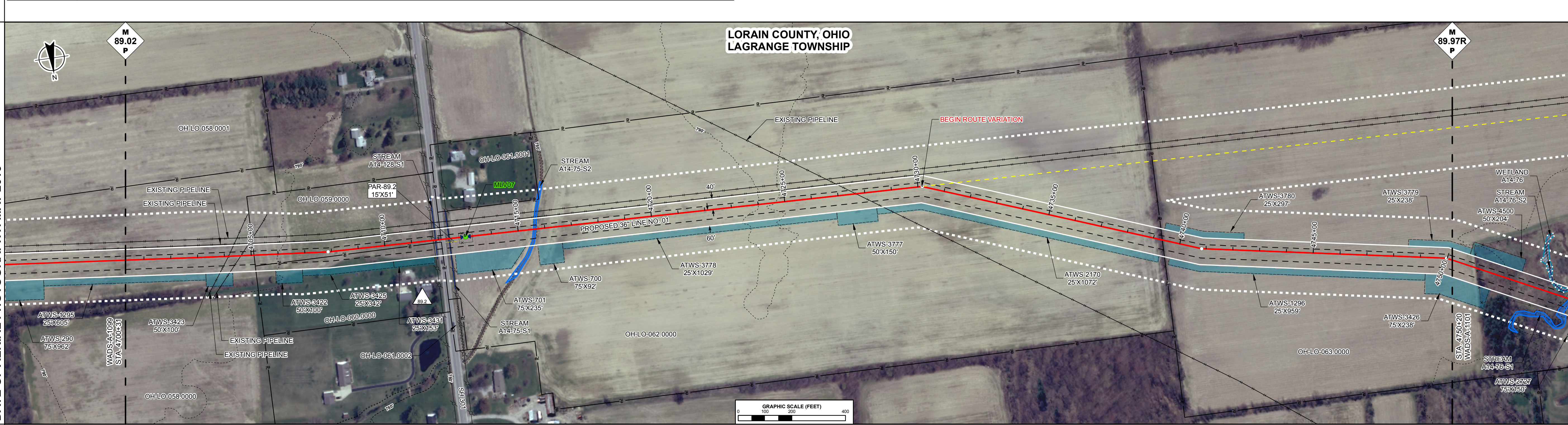
**ALIGNMENT LEGEND**

PIPELINE MILEPOST  
PROPOSED NEXUS PIPELINE - NOV. 2015 ROUTE  
PROPOSED NEXUS PIPELINE  
INTERCONNECTING PIPELINE TO TGP  
CONSTRUCTION LIMIT  
STUDY CORRIDOR  
STAGING AREA  
WAREYARD  
PERMANENT ROW  
ADDITIONAL TEMPORARY WORKSPACE  
METERING & REGULATION STATION (M&R) SITE  
COMPRESSOR STATION SITE  
FACILITIES TEMPORARY WORKSPACE  
FACILITIES PERMANENT WORKSPACE  
AGRICULTURAL PEM WETLAND BOUNDARY  
DELINEATED WETLAND BOUNDARY  
DELINEATED WATERBODY BANK  
DELINEATED WATERBODY CENTERLINE  
APPROXIMATE WETLAND BOUNDARY  
APPROXIMATE WATERBODY BANK  
APPROXIMATE WATERBODY CENTERLINE  
PERMANENT ACCESS ROAD  
TEMPORARY ACCESS ROAD

PROPERTY LINE  
CONTOUR  
MUNICIPALITY LINE  
FENCE  
FOREIGN PIPELINE  
POWERLINE  
WATER PIPELINE  
RAILROAD TRACK  
TELEPHONE LINE  
TEE TAP  
BLOW OFF VALVE  
TOWER  
HORIZONTAL DIRECTIONAL DRILL ENTRY/EXIT  
TANK  
WELL: GAS WATER OIL UNKNOWN

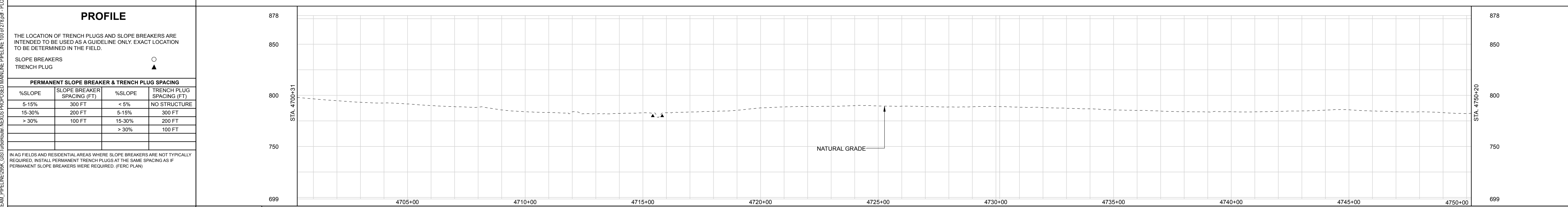
UTILITY LINES  
MAINLINE VALVE (MLV)  
MICROWAVE TOWER

**DATE OF AERIAL PHOTOGRAPHY: MAY 2015**



<b>ENVIRONMENTAL DATA</b>	<p>STA. 4711+90 CENTERLINE OF STREAM A14-128-S1 TRIBUTARY TO KING DITCH</p> <p>STA. 4712+38 CENTERLINE OF STREAM A14-75-S1 TRIBUTARY TO KING DITCH</p> <p>STA. 4715+38 STREAM TRIBUTARY TO KING DITCH A14-75-S2</p> <p>STA. 4715+72 STREAM TRIBUTARY TO KING DITCH A14-75-S2 EXIT</p>
---------------------------	---

<b>E &amp; S TYPICALS</b>	E&S TYPICALS WILL BE USED AS A PLAN AND WILL HAVE FURTHER INPUT FROM ENVIRONMENTAL INSPECTOR.
---------------------------	---



<b>LAND USE CLASSIFICATION</b>	<b>SOILS</b>																											
<table border="1"> <tr> <td>AG AGRICULTURAL</td> <td>OL OPEN LAND</td> <td>IC INDUSTRIAL/COMMERCIAL</td> </tr> <tr> <td>FW FOREST/WOODLAND</td> <td>R RESIDENTIAL</td> <td>OW OPEN WATER</td> </tr> </table>	AG AGRICULTURAL	OL OPEN LAND	IC INDUSTRIAL/COMMERCIAL	FW FOREST/WOODLAND	R RESIDENTIAL	OW OPEN WATER	<table border="1"> <tr> <td>AG</td> <td>IC/DL</td> <td>AG</td> <td>OW</td> <td>AG</td> <td>OL</td> <td>AG</td> </tr> <tr> <td colspan="7"><b>% SLOPE</b></td> </tr> <tr> <td colspan="2"></td> <td>&lt;5%</td> <td>5-15%</td> <td>&lt;5%</td> <td>15-30%</td> <td>&lt;5%</td> </tr> </table>	AG	IC/DL	AG	OW	AG	OL	AG	<b>% SLOPE</b>									<5%	5-15%	<5%	15-30%	<5%
AG AGRICULTURAL	OL OPEN LAND	IC INDUSTRIAL/COMMERCIAL																										
FW FOREST/WOODLAND	R RESIDENTIAL	OW OPEN WATER																										
AG	IC/DL	AG	OW	AG	OL	AG																						
<b>% SLOPE</b>																												
		<5%	5-15%	<5%	15-30%	<5%																						

<b>IG#</b>	DWG. NO.	DESCRIPTION	REV	DSN	CK	DESCRIPTION	ITEM	DESCRIPTION	QTY
	REFERENCE DRAWINGS				REVISIONS		MATERIALS		

3 ISSUED FOR FERC (08/2016)	
2 ISSUED FOR P3 (03/2016)	
1A ISSUED FOR FERC (02/2016)	
1B ISSUED FOR FERC (02/2016)	
0B ISSUED FOR FERC FILING (11/2015)	
0A ISSUED FOR FERC FILING (11/2015)	
0 ISSUED FOR FERC FILING (11/2015)	

GENERAL NOTES:  
1.) ALL STATIONING IS IN U.S. FEET.  
2.) CONTOUR LINES AND ELEVATIONS ARE IN U.S. FEET.

ENGINEERING APPROVALS			
DRAWN BY:		CONSTRUCTION	
NAME	SIGNATURE	DATE	DATE

<b>WADS - CLYD NEXUS PROJECT PROPOSED 36" LINE NO. 01 ALIGNMENT SHEET</b>			
LOC. LORAIN COUNTY, OHIO			
YEAR: 2017	W.B.S.	Scale 1" = 200'	

**WADS-A-1100**

**NEXUS GAS TRANSMISSION**

REV. 3











<b>RIGHT-OF-WAY</b> TRACT NUMBERS	5192+74	OH-LO-114.0000 15.9 RODS 263 FT.	5195+37	OH-LO-114.0100 25.1 RODS 414 FT.	5195+45	OH-LO-115.0100 15.7 RODS 259 FT.	5202+10	OH-LO-118.0000 80.2 RODS 1323 FT.	5215+33	OH-LO-119.0000 51.0 RODS 841 FT.	5223+74
--------------------------------------	---------	--	---------	--	---------	--	---------	---	---------	--	---------

<b>SURVEY DATA</b> SURVEY COMPANY: FIELD BOOK: PAGES:	STA. 5193+21 PL - 20'00" LT STA. 5194+86 TOP BANK STA. 5195+04 DITCH DEPTH STA. 5195+24 TOP BANK STA. 5197+27 PL - 20'00" RT STA. 5198+25 POWERLINE VERT. CLEARANCE 16 FT STA. 5198+35 TOE BANK STA. 5198+41 TOP BANK STA. 5198+42 ROAD EDGE STA. 5198+45 ROAD EDGE STA. 5198+48 TOE BANK STA. 5198+68 TOE BANK STA. 5198+73 TOP BANK STA. 5202+24 PL - 3'16.32" LT STA. 5205+08 PIPELINE (SCALED) STA. 5215+33 PL - 1'30.64" RT STA. 5219+69 PL - 3'26.19" RT STA. 5224+05 DRAIN DEPTH 1.5 FT. CENTERLINE STA. 5224+55 POWERLINE VERT. CLEARANCE 22 FT.
--	--

<b>CLASS LOCATION</b>	CLASS 2
-----------------------	---------

PROJ. MOD. NUMBER	DESCRIPTION
98.4	RESOURCE UPDATED BASED ON WETLAND FIELD SURVEY.
98.5	TWS ADJUSTED TO REDUCE RESIDENTIAL IMPACTS.
98.9	RESOURCES UPDATED BASED ON WETLAND/WATERBODY FIELD SURVEYS.

**ALIGNMENT LEGEND**

PIPELINE MILEPOST  
PROPOSED NEXUS PIPELINE - NOV. 2015 ROUTE  
PROPOSED NEXUS PIPELINE  
INTERCONNECTING PIPELINE TO TGP  
CONSTRUCTION LIMIT  
STUDY CORRIDOR  
STAGING AREA  
WAREYARD  
PERMANENT ROW  
ADDITIONAL TEMPORARY WORKSPACE  
METERING & REGULATION STATION (M&R) SITE  
COMPRESSOR STATION SITE  
FACILITIES TEMPORARY WORKSPACE  
FACILITIES PERMANENT WORKSPACE  
AGRICULTURAL PEM WETLAND BOUNDARY  
DELINEATED WETLAND BOUNDARY  
DELINEATED WATERBODY BANK  
DELINEATED WATERBODY CENTERLINE  
APPROXIMATE WETLAND BOUNDARY  
APPROXIMATE WATERBODY BANK  
APPROXIMATE WATERBODY CENTERLINE  
PERMANENT ACCESS ROAD  
TEMPORARY ACCESS ROAD  
PROPERTY LINE  
CONTOUR  
MUNICIPALITY LINE  
FENCE  
FOREIGN PIPELINE  
POWERLINE  
WATER PIPELINE  
RAILROAD TRACK  
TELEPHONE LINE  
TEE TAP  
BLOW OFF VALVE  
TOWER  
HORIZONTAL DIRECTIONAL DRILL ENTRY/EXIT  
TANK  
WELL: GAS WATER OIL UNKNOWN

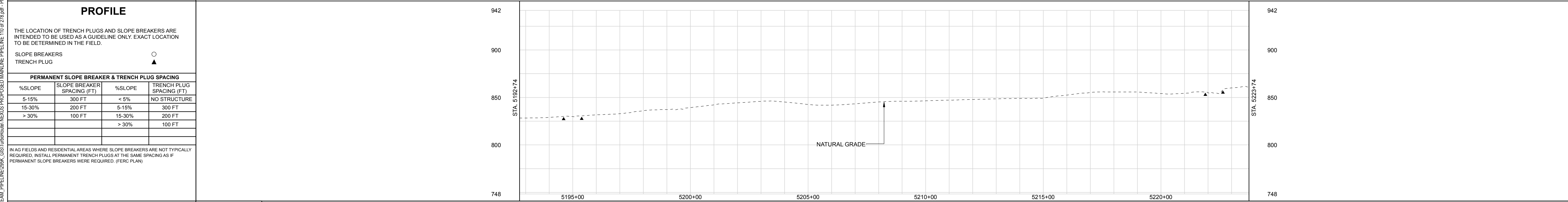
UTILITY LINES  
MAINLINE VALVE (MLV)  
MICROWAVE TOWER

DATE OF AERIAL PHOTOGRAPHY: MAY 2015



<b>ENVIRONMENTAL DATA</b>	STA. 5194+81 WETLAND C15-61 ENTER STA. 5195+64 WETLAND C15-61 EXIT STA. 5224+55 WETLAND A15-85 ENTER STA. 5221+87 WETLAND A15-85 EXIT STA. 5219+69 CENTERLINE OF STREAM A15-85-S1 STA. 5218+85 CENTERLINE OF VERMILLION RIVER TRIBUTARY TO EAST FORK STA. 5218+85 CENTERLINE OF VERMILLION RIVER TRIBUTARY TO EAST FORK STA. 5222+70 WETLAND A15-85 ENTER STA. 5222+70 WETLAND A15-85 EXIT
---------------------------	--

<b>E &amp; S TYPICALS</b>	E&S TYPICALS WILL BE USED AS A PLAN AND WILL HAVE FURTHER INPUT FROM ENVIRONMENTAL INSPECTOR.
---------------------------	---



<b>LAND USE CLASSIFICATION</b>	<b>SOILS</b>	
AG AGRICULTURAL OL OPEN LAND IC INDUSTRIAL/COMMERCIAL FW FOREST/WOODLAND R RESIDENTIAL OW OPEN WATER	<b>LAND USE</b>	AG OL AG IC R AG OL AG
	<b>% SLOPE</b>	<5% 5-15% <5%

<b>GENERAL NOTES:</b> 1.) ALL STATIONING IS IN U.S. FEET. 2.) CONTOUR LINES AND ELEVATIONS ARE IN U.S. FEET.	<b>ENGINEERING APPROVALS</b> DRAWN BY: _____ NAME SIGNATURE DATE SIGNATURE DATE	<b>WADS - CLYD NEXUS PROJECT</b> PROPOSED 36" LINE NO. 01 ALIGNMENT SHEET LOC. LORAIN COUNTY, OHIO YEAR: 2017 W.B.S. Scale 1" = 200'																														
	<table border="1"> <thead> <tr> <th>3A</th> <th>ISSUED FOR FERC (08/2016)</th> </tr> </thead> <tbody> <tr> <td>3</td> <td>ISSUED FOR FERC (07/2016)</td> </tr> <tr> <td>2</td> <td>ISSUED FOR P3 (03/2016)</td> </tr> <tr> <td>1</td> <td>ISSUED FOR FERC (02/2016)</td> </tr> <tr> <td>0A</td> <td>ISSUED FOR FERC FILING (11/2015)</td> </tr> <tr> <td>0</td> <td>ISSUED FOR FERC FILING (11/2015)</td> </tr> </tbody> </table>	3A		ISSUED FOR FERC (08/2016)	3	ISSUED FOR FERC (07/2016)	2	ISSUED FOR P3 (03/2016)	1	ISSUED FOR FERC (02/2016)	0A	ISSUED FOR FERC FILING (11/2015)	0	ISSUED FOR FERC FILING (11/2015)	<table border="1"> <thead> <tr> <th>DWG. NO.</th> <th>DESCRIPTION</th> <th>REV</th> <th>DSN</th> <th>CK</th> <th>DESCRIPTION</th> <th>ITEM</th> <th>DESCRIPTION</th> <th>QTY</th> </tr> </thead> <tbody> <tr> <td></td> <td>REFERENCE DRAWINGS</td> <td></td> <td></td> <td></td> <td>REVISIONS</td> <td></td> <td>MATERIALS</td> <td></td> </tr> </tbody> </table>	DWG. NO.	DESCRIPTION	REV	DSN	CK	DESCRIPTION	ITEM	DESCRIPTION	QTY		REFERENCE DRAWINGS				REVISIONS		MATERIALS
3A	ISSUED FOR FERC (08/2016)																															
3	ISSUED FOR FERC (07/2016)																															
2	ISSUED FOR P3 (03/2016)																															
1	ISSUED FOR FERC (02/2016)																															
0A	ISSUED FOR FERC FILING (11/2015)																															
0	ISSUED FOR FERC FILING (11/2015)																															
DWG. NO.	DESCRIPTION	REV	DSN	CK	DESCRIPTION	ITEM	DESCRIPTION	QTY																								
	REFERENCE DRAWINGS				REVISIONS		MATERIALS																									



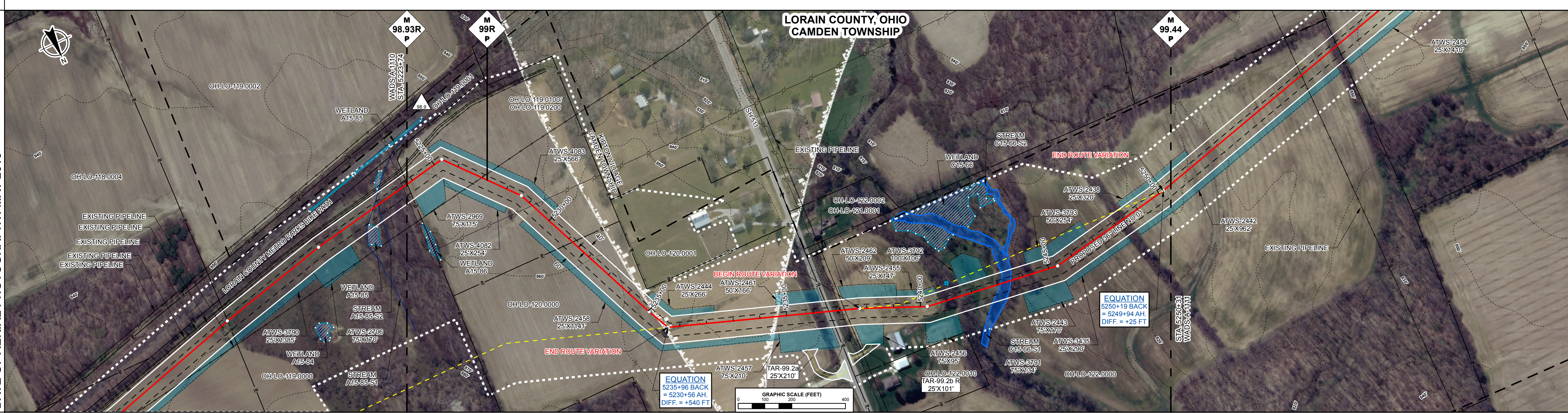
<b>RIGHT-OF-WAY</b> TRACT NUMBERS	OH-LO-119.0000 0.1 RODS 2 FT.	OH-LO-119.0100/OH-LO-119.0200 45.0 RODS 743 FT.	OH-LO-120.0000 65.4 RODS 1079 FT.	OH-LO-122.0000 84.7 RODS 1398 FT.
<b>SURVEY DATA</b> SURVEY COMPANY: FIELD BOOK: PAGES:	STA. 5223+74 5223+76	STA. 5223+84 PI - 89+99' RT STA. 5224+68 PIPELINE (SCALED) STA. 5228+45 PI - 17+52' RT STA. 5229+18 POWERLINE VERT. CLEARANCE 22 FT	STA. 5235+05 PI - 2+83' 36" LT STA. 5230+55 PI - 45' 00" LT	STA. 5238+10 TOP BANK STA. 5238+26 TOP BANK STA. 5238+31 DITCH DEPTH 0 STA. 5238+35 TOP BANK STA. 5238+40 ROAD EDGE STA. 5238+48 ROAD EDGE STA. 5238+73 TOP BANK STA. 5238+77 TOP BANK STA. 5238+98 TOP BANK STA. 5238+98 POWERLINE STA. 5238+117 DUNK PI STA. 5240+25 PI - 15+20' LT STA. 5241+19 WATER WELL 62 FT. LEFT STA. 5241+67 TOP BANK STA. 5241+83 TOE BANK STA. 5245+35 PI - 18+54" LT STA. 5250+31 PI - 47' 01" LT
<b>CLASS LOCATION</b>	CLASS 1		CLASS 2	CLASS 1

<b>PIPE MATERIAL</b>	PROJ. MOD. NUMBER 98.9	DESCRIPTION RESOURCES UPDATED BASED ON WETLAND/WATERBODY FIELD SURVEYS.
----------------------	---------------------------	--

**ALIGNMENT LEGEND**

- PIPELINE MILEPOST
- PROPOSED NEXUS PIPELINE - NOV. 2015 ROUTE
- PROPOSED NEXUS PIPELINE
- INTERCONNECTING PIPELINE TO TGP
- CONSTRUCTION LIMIT
- STUDY CORRIDOR
- STAGING AREA
- WAREYARD
- PERMANENT ROW
- ADDITIONAL TEMPORARY WORKSPACE
- METERING & REGULATION STATION (M&R) SITE
- COMPRESSOR STATION SITE
- FACILITIES TEMPORARY WORKSPACE
- FACILITIES PERMANENT WORKSPACE
- AGRICULTURAL PEM WETLAND BOUNDARY
- DELINEATED WETLAND BOUNDARY
- DELINEATED WATERBODY BANK
- DELINEATED WATERBODY CENTERLINE
- APPROXIMATE WETLAND BOUNDARY
- APPROXIMATE WATERBODY BANK
- APPROXIMATE WATERBODY CENTERLINE
- PERMANENT ACCESS ROAD
- TEMPORARY ACCESS ROAD
- PROPERTY LINE
- CONTOUR
- MUNICIPALITY LINE
- FENCE
- FOREIGN PIPELINE
- POWERLINE
- WATER PIPELINE
- RAILROAD TRACK
- TELEPHONE LINE
- TEE TAP
- BLOW OFF VALVE
- TOWER
- HORIZONTAL DIRECTIONAL DRILL ENTRY/EXIT
- TANK
- WELL: GAS, WATER, OIL, UNKNOWN
- UTILITY LINES
- MAINLINE VALVE (MLV)
- MICROWAVE TOWER

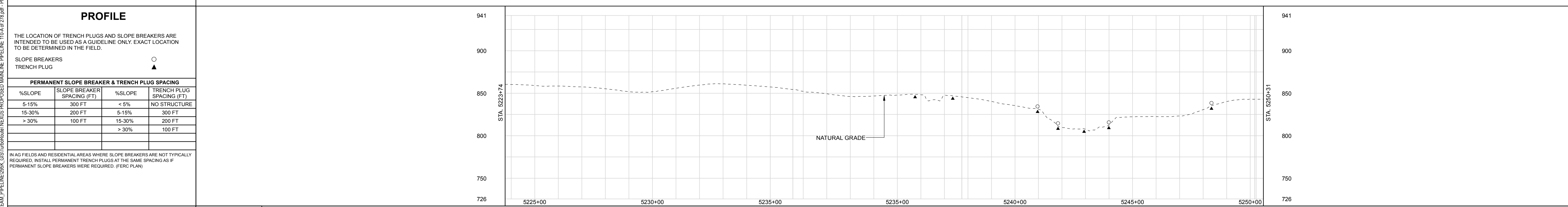
**DATE OF AERIAL PHOTOGRAPHY: MAY 2015**



<b>ENVIRONMENTAL DATA</b>	<p>STA. 5242+62 STREAM EAST FORK VERMILION RIVER C15-66-S1 ENTER</p> <p>STA. 5243+63 STREAM EAST FORK VERMILION RIVER C15-66-S1 EXIT</p>
---------------------------	--

**E & S TYPICALS**

E&S TYPICALS WILL BE USED AS A PLAN AND WILL HAVE FURTHER INPUT FROM ENVIRONMENTAL INSPECTOR.



<b>LAND USE CLASSIFICATION</b>	<b>SOILS</b>	<b>% SLOPE</b>
AG AGRICULTURAL, OL OPEN LAND, IC INDUSTRIAL/COMMERCIAL, FW FOREST/WOODLAND, R RESIDENTIAL, OW OPEN WATER	AG	< 5%, 5-15%, < 5%, 15-30%, < 5%, 5-15%, < 5%, 15-30%, < 5%, 5-15%, < 5%

<b>IG#</b>	DWG. NO.	DESCRIPTION	REV	DSN	CK	DESCRIPTION	ITEM	DESCRIPTION	QTY							
	REFERENCE DRAWINGS															
	<table border="1"> <tr> <td>3</td> <td>ISSUED FOR FERC (07/2016)</td> </tr> <tr> <td>2</td> <td>ISSUED FOR P3 (03/2016)</td> </tr> <tr> <td>1A</td> <td>ISSUED FOR FERC (02/2016)</td> </tr> <tr> <td>1</td> <td>ISSUED FOR FERC (02/2016)</td> </tr> </table>									3	ISSUED FOR FERC (07/2016)	2	ISSUED FOR P3 (03/2016)	1A	ISSUED FOR FERC (02/2016)	1
3	ISSUED FOR FERC (07/2016)															
2	ISSUED FOR P3 (03/2016)															
1A	ISSUED FOR FERC (02/2016)															
1	ISSUED FOR FERC (02/2016)															

<b>GENERAL NOTES:</b>		<b>ENGINEERING APPROVALS</b>	
1.) ALL STATIONING IS IN U.S. FEET.		DRAWN BY:	BID
2.) CONTOUR LINES AND ELEVATIONS ARE IN U.S. FEET.		NAME	CONSTRUCTION
		SIGNATURE	SIGNATURE
		DATE	DATE

<b>WADS - CLYD NEXUS PROJECT PROPOSED 36" LINE NO. 01 ALIGNMENT SHEET</b>			
LOC. LORAIN COUNTY, OHIO			
YEAR: 2017	W.B.S.	Scale 1" = 200'	WADS-A-1110-A

<b>NEXUS</b> GAS TRANSMISSION		REV. 3
----------------------------------	--	--------



<b>RIGHT-OF-WAY</b>	OH-LO-127.0000 5300+31 15.5 RODS 256 FT. 5302+87	OH-LO-128.0000 58.6 RODS 967 FT.	OH-LO-129.0000 24.8 RODS 410 FT.	OH-LO-130.0000 24.4 RODS 403 FT.	OH-LO-131.0000 60.7 RODS 1001 FT.	OH-LO-132.0000 50.2 RODS 828 FT.	OH-LO-133.0000 56.7 RODS 935 FT.	OH-HU-002.0000 12.1 RODS 200 FT.
---------------------	---	-------------------------------------	-------------------------------------	-------------------------------------	--------------------------------------	-------------------------------------	-------------------------------------	-------------------------------------

**SURVEY DATA**

SURVEY COMPANY:  
FIELD BOOK:  
PAGES:

CLASS LOCATION: CLASS 2

PROJ. MOD. NUMBER	DESCRIPTION
100.6	ATWS ADJUSTED DUE TO LANDOWNER REQUEST.

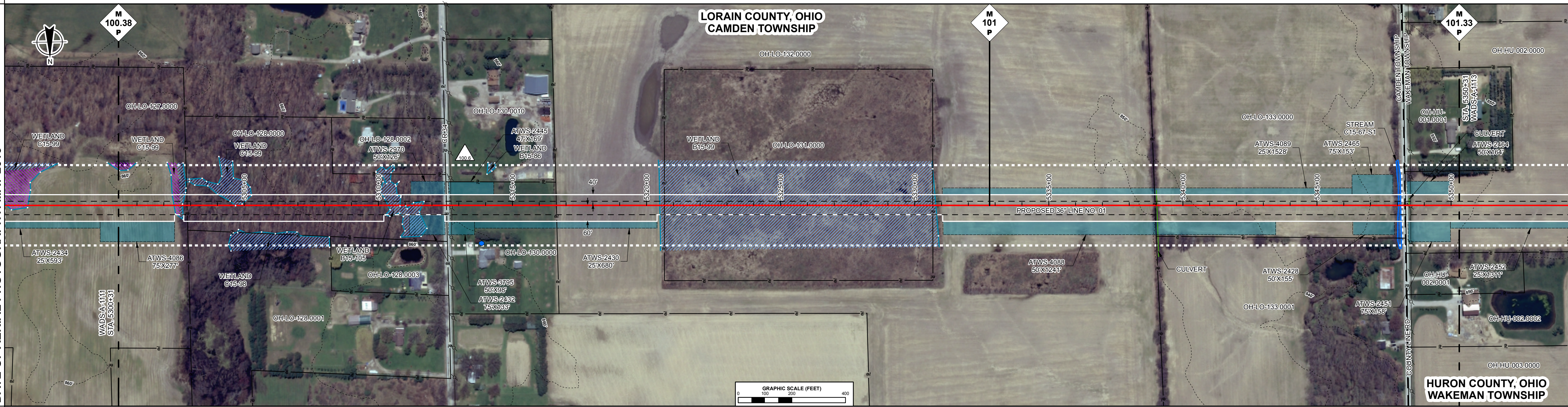
**ALIGNMENT LEGEND**

PIPELINE MILEPOST  
PROPOSED NEXUS PIPELINE - NOV. 2015 ROUTE  
PROPOSED NEXUS PIPELINE  
INTERCONNECTING PIPELINE TO TGP  
CONSTRUCTION LIMIT  
STUDY CORRIDOR  
STAGING AREA  
WAREYARD  
PERMANENT ROW  
ADDITIONAL TEMPORARY WORKSPACE  
METERING & REGULATION STATION (M&R) SITE  
COMPRESSOR STATION SITE  
FACILITIES TEMPORARY WORKSPACE  
FACILITIES PERMANENT WORKSPACE  
AGRICULTURAL PEM WETLAND BOUNDARY  
DELINEATED WETLAND BOUNDARY  
DELINEATED WATERBODY BANK  
DELINEATED WATERBODY CENTERLINE  
APPROXIMATE WETLAND BOUNDARY  
APPROXIMATE WATERBODY BANK  
APPROXIMATE WATERBODY CENTERLINE  
PERMANENT ACCESS ROAD  
TEMPORARY ACCESS ROAD

PROPERTY LINE  
CONTOUR  
MUNICIPALITY LINE  
FENCE  
FOREIGN PIPELINE  
POWERLINE  
WATER PIPELINE  
RAILROAD TRACK  
TELEPHONE LINE  
TEE TAP  
BLOW OFF VALVE  
TOWER  
HORIZONTAL DIRECTIONAL DRILL ENTRY/EXIT  
TANK  
WELL: GAS WATER OIL UNKNOWN

UTILITY LINES  
MAINLINE VALVE (MLV)  
MICROWAVE TOWER

DATE OF AERIAL PHOTOGRAPHY: MAY 2015

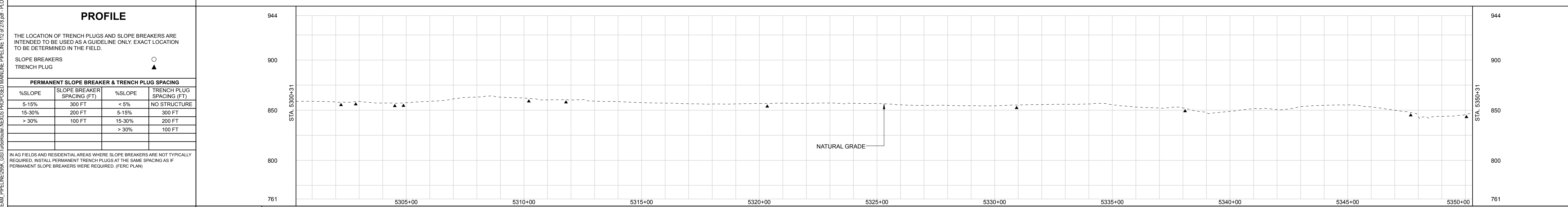


**ENVIRONMENTAL DATA**

STA. 5302+81 WETLAND C15-99 ENTER	STA. 5302+79 WETLAND C15-99 EXIT	STA. 5304+03 WETLAND C15-99 ENTER	STA. 5305+27 WETLAND C15-99 EXIT	STA. 5310+13 WETLAND B15-105 ENTER	STA. 5311+81 WETLAND B15-105 EXIT	STA. 5320+40 WETLAND B15-99 ENTER	STA. 5330+82 WETLAND B15-99 EXIT	STA. 5340+11 STREAM CREEK C15-97 S1 ENTER	STA. 5340+14 STREAM FRANKENBURG CREEK C15-97 S1 EXIT
-----------------------------------	----------------------------------	-----------------------------------	----------------------------------	------------------------------------	-----------------------------------	-----------------------------------	----------------------------------	---	--

**E & S TYPICALS**

E&S TYPICALS WILL BE USED AS A PLAN AND WILL HAVE FURTHER INPUT FROM ENVIRONMENTAL INSPECTOR.



LAND USE CLASSIFICATION		SOILS		LAND USE		% SLOPE	
AG	OL	IC	FW	AG	OL	AG	OL
AG	OL	IC	FW	AG	OL	AG	OL
FW	R	OW					

<b>GENERAL NOTES:</b> 1.) ALL STATIONING IS IN U.S. FEET. 2.) CONTOUR LINES AND ELEVATIONS ARE IN U.S. FEET.	<b>ENGINEERING APPROVALS</b>		<b>WADS - CLYD NEXUS PROJECT PROPOSED 36" LINE NO. 01 ALIGNMENT SHEET</b>			
	DRAWN BY: NAME	BID SIGNATURE	CONSTRUCTION DATE	CONSTRUCTION SIGNATURE		
	LOC. LORAIN COUNTY, OHIO AND HURON COUNTY, OHIO					
DWG. NO. REFERENCE DRAWINGS	REV DSN CK DESCRIPTION REVISIONS	ITEM DESCRIPTION MATERIALS	QTY	YEAR: 2017 W.B.S.	Scale 1" = 200' WADS-A-1112	REV. 3

P:\2016\UPSTREAM\PIPELINE\NEXUS\PROPOSED MAINLINE PIPELINE 112 of 278.pdf - PLOT TIME: 2016-08-08 14:28:48







<b>RIGHT-OF-WAY</b> TRACT NUMBERS	OH-ER-046.0000 5888+31 6.2 RODS 102 FT. 5889+33	OH-ER-047.0000 44.4 RODS 733 FT.	OH-ER-048.0000 36.8 RODS 607 FT.	OH-ER-049.0000 17.0 RODS 281 FT.	OH-ER-051.0000 12.4 RODS 205 FT.	OH-ER-052.0000 6.2 RODS 102 FT.	OH-ER-053.0000 6.1 RODS 101 FT.	OH-ER-054.0000 6.1 RODS 101 FT.	OH-ER-055.0000 43.9 RODS 725 FT.	OH-ER-055.0100 5917+08 0.4 RODS 6 FT.	OH-ER-059.0000 5917+04 15.9 RODS 262 FT.	OH-ER-059.0100 5920+56 0.8 RODS 13 FT.	OH-ER-059.0000 84.4 RODS 1392 FT.	OH-ER-060.0000 5934+11 25.5 RODS 420 FT.	OH-ER-060.0000 5938+31
<b>SURVEY DATA</b> SURVEY COMPANY: FIELD BOOK: PAGES:	STA. 5888+32 FENCE STA. 5888+38 TOP BANK STA. 5888+40 DITCH DEPTH STA. 5888+42 FENCE STA. 5888+43 TOP BANK STA. 5888+62 FENCE  STA. 5892+27 FENCE  STA. 5894+23 FENCE STA. 5894+38 TOP BANK STA. 5897+07 TOE BANK  STA. 5905+31 PL - 10'X13'18" RT  STA. 5905+54 STA. 5905+56 PL - 10'X30'5" RT  STA. 5907+58 PL - 2'X9'2" LT  STA. 5914+90 PL - 45'00" RT  STA. 5917+08 STA. 5917+43 DITCH DEPTH STA. 5917+46 ROAD EDGE STA. 5917+48 PAVED SH 61 STA. 5917+54 PAVED CR 13 STA. 5917+56 MUNICIPALITY CENTERLINE STA. 5918+26 DITCH DEPTH STA. 5918+28 CENTERLINE STA. 5918+30 CENTERLINE STA. 5918+32 PL - 30'00" LT STA. 5921+18 PL - 30'00" LT  STA. 5922+53 TOP BANK STA. 5923+45 TOE BANK  STA. 5928+02 FENCE STA. 5928+03 FENCE  STA. 5928+56 PL - 4'7'29" LT  STA. 5928+73 FENCE  STA. 5933+25 PL - 89'59'99" RT  STA. 5934+11 STA. 5938+31														

<b>CLASS LOCATION</b>	CLASS 2	CLASS 1
-----------------------	---------	---------

<b>PIPE MATERIAL</b>	PROJ. MOD. NUMBER: 112.1	DESCRIPTION: ATWS ADJUSTED TO REDUCE RESIDENTIAL IMPACTS.
----------------------	--------------------------	---

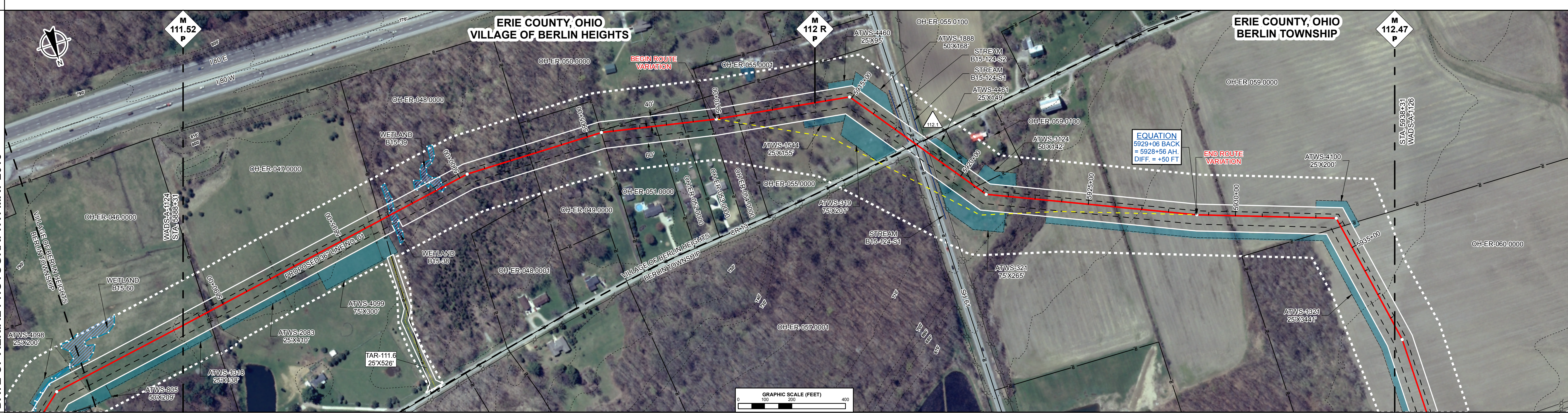
**ALIGNMENT LEGEND**

PIPELINE MILEPOST  
PROPOSED NEXUS PIPELINE - NOV. 2015 ROUTE  
PROPOSED NEXUS PIPELINE  
INTERCONNECTING PIPELINE TO TGP  
CONSTRUCTION LIMIT  
STUDY CORRIDOR  
STAGING AREA  
WAREYARD  
PERMANENT ROW  
ADDITIONAL TEMPORARY WORKSPACE  
METERING & REGULATION STATION (M&R) SITE  
COMPRESSOR STATION SITE  
FACILITIES TEMPORARY WORKSPACE  
FACILITIES PERMANENT WORKSPACE  
AGRICULTURAL PEM WETLAND BOUNDARY  
DELINEATED WETLAND BOUNDARY  
DELINEATED WATERBODY BANK  
DELINEATED WATERBODY CENTERLINE  
APPROXIMATE WETLAND BOUNDARY  
APPROXIMATE WATERBODY BANK  
APPROXIMATE WATERBODY CENTERLINE  
PERMANENT ACCESS ROAD  
TEMPORARY ACCESS ROAD

PROPERTY LINE  
CONTOUR  
MUNICIPALITY LINE  
FENCE  
FOREIGN PIPELINE  
POWERLINE  
WATER PIPELINE  
RAILROAD TRACK  
TELEPHONE LINE  
TEE TAP  
BLOW OFF VALVE  
TOWER  
HORIZONTAL DIRECTIONAL DRILL ENTRY/EXIT  
TANK  
WELL: GAS WATER OIL UNKNOWN

UTILITY LINES  
MAINLINE VALVE (MLV)  
MICROWAVE TOWER

**DATE OF AERIAL PHOTOGRAPHY: MAY 2015**



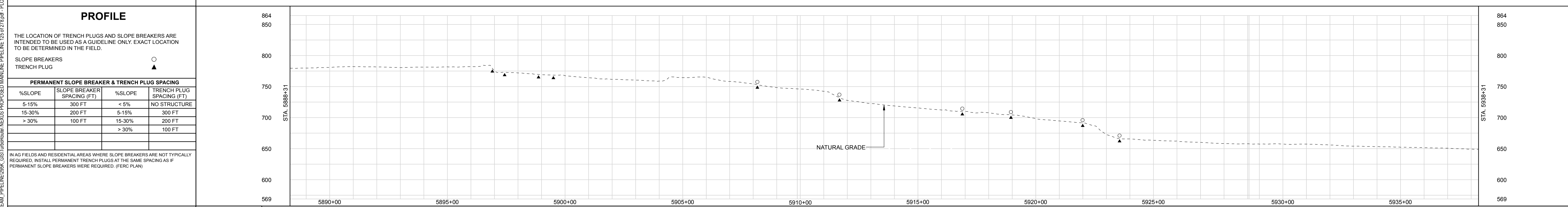
**ENVIRONMENTAL DATA**

STA. 5897+00 WETLAND B15-38  
 STA. 5897+37 WETLAND B15-38  
 STA. 5898+33 WETLAND B15-39  
 STA. 5899+37 WETLAND B15-39

STA. 5917+49 CENTERLINE OF TRIBUTARY TO OLD WOMAN CREEK

**E & S TYPICALS**

E&S TYPICALS WILL BE USED AS A PLAN AND WILL HAVE FURTHER INPUT FROM ENVIRONMENTAL INSPECTOR.



<b>LAND USE CLASSIFICATION</b>	<b>SOILS</b>
AG AGRICULTURAL OL OPEN LAND IC INDUSTRIAL/COMMERCIAL FW FOREST/WOODLAND R RESIDENTIAL OW OPEN WATER	LAND USE % SLOPE

<b>GENERAL NOTES:</b> 1.) ALL STATIONING IS IN U.S. FEET. 2.) CONTOUR LINES AND ELEVATIONS ARE IN U.S. FEET.	<b>ENGINEERING APPROVALS</b>		<b>WADS - CLYD NEXUS PROJECT</b> PROPOSED 36" LINE NO. 01 ALIGNMENT SHEET  LOC. ERIE COUNTY, OHIO YEAR: 2017 W.B.S. Scale 1" = 200'		
	DRAWN BY:	BID SIGNATURE DATE			CONSTRUCTION SIGNATURE DATE
	NAME	SIGNATURE DATE			SIGNATURE DATE

DWG. NO.	DESCRIPTION	REV	DSN	CK	DESCRIPTION	ITEM	DESCRIPTION	QTY
	REFERENCE DRAWINGS				REVISIONS		MATERIALS	







<b>RIGHT-OF-WAY</b> TRACT NUMBERS	6788+31	OH-ER-157.0000 51.0 RODS 842 FT.	6795+73	OH-ER-158.0000 30.1 RODS 497 FT.	6801+70	OH-ER-160.0000 136.2 RODS 2247 FT.	6824+17	OH-ER-161.0000 85.7 RODS 1414 FT.	6838+31
--------------------------------------	---------	--	---------	--	---------	--	---------	---	---------

**SURVEY DATA**  
SURVEY COMPANY:  
FIELD BOOK:  
PAGES:

STA. 6799+61 TEE TAP, MR05, (DEO DELIVERY)  
STA. 6801+16 TOE BANK  
STA. 6801+50 TOP BANK  
STA. 6801+50 TOE BANK  
STA. 6801+48 PAVED, BILLINGS RD  
STA. 6801+48 TOE BANK  
STA. 6801+48 TOE BANK  
STA. 6801+48 TOE BANK  
STA. 6802+17 TOE BANK

STA. 6807+44 PL - 6"63.34" RT  
STA. 6812+48 PL - 1"30.45" RT

STA. 6824+39 TOP BANK  
STA. 6829+31 PL - 4"11.13" RT

**CLASS LOCATION** CLASS 1

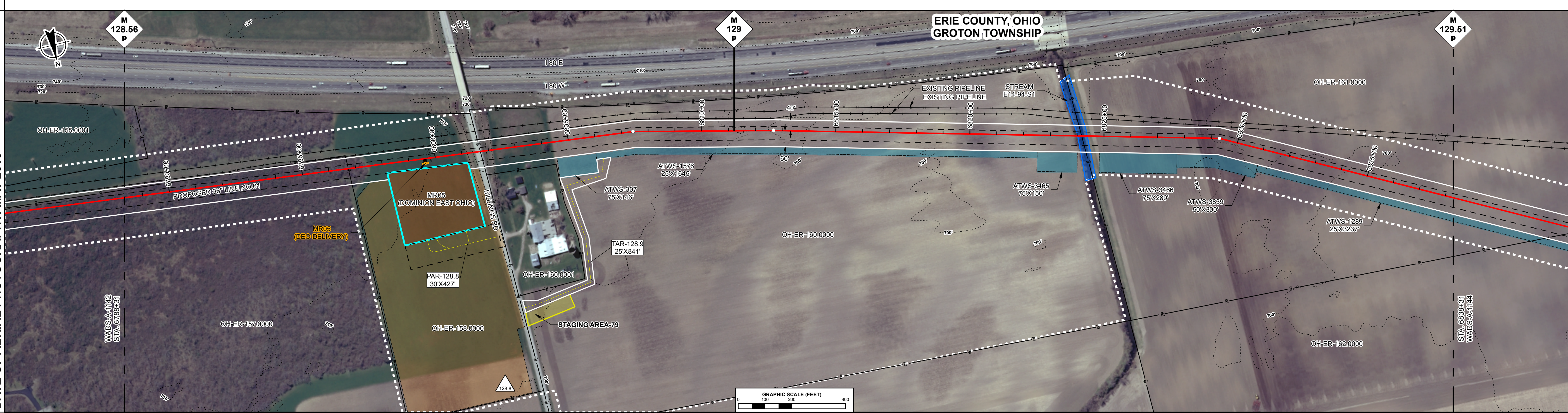
<b>PIPE MATERIAL</b>	PROJ. MOD. NUMBER 128.8	TWS ADJUSTED BASED ON UPDATED CIVIL FIELD SURVEY.	DESCRIPTION
----------------------	----------------------------	---	-------------

**ALIGNMENT LEGEND**

PIPELINE MILEPOST  
PROPOSED NEXUS PIPELINE - NOV. 2015 ROUTE  
PROPOSED NEXUS PIPELINE  
INTERCONNECTING PIPELINE TO TGP  
CONSTRUCTION LIMIT  
STUDY CORRIDOR  
STAGING AREA  
WAREYARD  
PERMANENT ROW  
ADDITIONAL TEMPORARY WORKSPACE  
METERING & REGULATION STATION (M&R) SITE  
COMPRESSOR STATION SITE  
FACILITIES TEMPORARY WORKSPACE  
FACILITIES PERMANENT WORKSPACE  
AGRICULTURAL PEM WETLAND BOUNDARY  
DELINEATED WETLAND BOUNDARY  
DELINEATED WATERBODY BANK  
DELINEATED WATERBODY CENTERLINE  
APPROXIMATE WETLAND BOUNDARY  
APPROXIMATE WATERBODY BANK  
APPROXIMATE WATERBODY CENTERLINE  
PERMANENT ACCESS ROAD  
TEMPORARY ACCESS ROAD

PROPERTY LINE  
CONTOUR  
MUNICIPALITY LINE  
FENCE  
FOREIGN PIPELINE  
POWERLINE  
WATER PIPELINE  
RAILROAD TRACK  
TELEPHONE LINE  
UTILITY LINES  
TEE TAP  
BLOW OFF VALVE  
TOWER  
HORIZONTAL DIRECTIONAL DRILL ENTRY/EXIT  
TANK  
WELL: GAS, WATER, OIL, UNKNOWN

DATE OF AERIAL PHOTOGRAPHY: MAY 2015



**ENVIRONMENTAL DATA**

STA. 6823+89 STREAM MILLS CREEK E14-94-S1 ENTER  
STA. 6824+51 STREAM MILLS CREEK E14-94-S1 EXIT

**E & S TYPICALS**

E&S TYPICALS WILL BE USED AS A PLAN AND WILL HAVE FURTHER INPUT FROM ENVIRONMENTAL INSPECTOR.

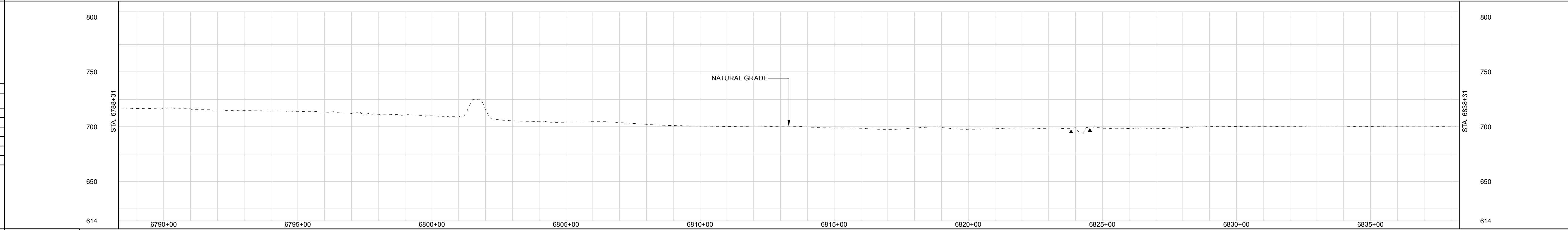
**PROFILE**

THE LOCATION OF TRENCH PLUGS AND SLOPE BREAKERS ARE INTENDED TO BE USED AS A GUIDELINE ONLY. EXACT LOCATION TO BE DETERMINED IN THE FIELD.

SLOPE BREAKERS  
TRENCH PLUG

PERMANENT SLOPE BREAKER & TRENCH PLUG SPACING			
%SLOPE	SLOPE BREAKER SPACING (FT)	%SLOPE	TRENCH PLUG SPACING (FT)
5-15%	300 FT	< 5%	NO STRUCTURE
15-30%	200 FT	5-15%	300 FT
> 30%	100 FT	15-30%	200 FT
		> 30%	100 FT

IN AG FIELDS AND RESIDENTIAL AREAS WHERE SLOPE BREAKERS ARE NOT TYPICALLY REQUIRED, INSTALL PERMANENT TRENCH PLUGS AT THE SAME SPACING AS IF PERMANENT SLOPE BREAKERS WERE REQUIRED. (FERC PLAN)



<b>LAND USE CLASSIFICATION</b>	<b>SOILS</b>
AG AGRICULTURAL OL OPEN LAND IC INDUSTRIAL/COMMERCIAL FW FOREST/WOODLAND R RESIDENTIAL OW OPEN WATER	FW AG OL IC OL AG OL OW OL AG
<b>% SLOPE</b>	<b>% SLOPE</b>
< 5%	5-15% < 5% 5-15% 5-15% 5-15% 5-15% 5-15%
< 5%	< 5% 5-15% 15-30%

<b>IG#</b>	DWG. NO.	DESCRIPTION	REV	DSN	CK	DESCRIPTION	ITEM	DESCRIPTION	QTY
	REFERENCE DRAWINGS				REVISIONS		MATERIALS		

ISSUED FOR FERC (07/2016)  
ISSUED FOR P3 (03/2016)  
ISSUED FOR FERC (02/2016)  
ISSUED FOR FERC (02/2016)  
ISSUED FOR FERC FILING (11/2015)  
ISSUED FOR FERC FILING (11/2015)  
ISSUED FOR FERC FILING (11/2015)

GENERAL NOTES:  
1.) ALL STATIONING IS IN U.S. FEET.  
2.) CONTOUR LINES AND ELEVATIONS ARE IN U.S. FEET.

<b>ENGINEERING APPROVALS</b>			
DRAWN BY:		CONSTRUCTION	
NAME	SIGNATURE	DATE	DATE

**WADS - CLYD NEXUS PROJECT**  
PROPOSED 36" LINE NO. 01  
ALIGNMENT SHEET

LOC. ERIE COUNTY, OHIO

YEAR: 2017    W.B.S.    Scale 1" = 200'    WADS-A-1143    REV. 3



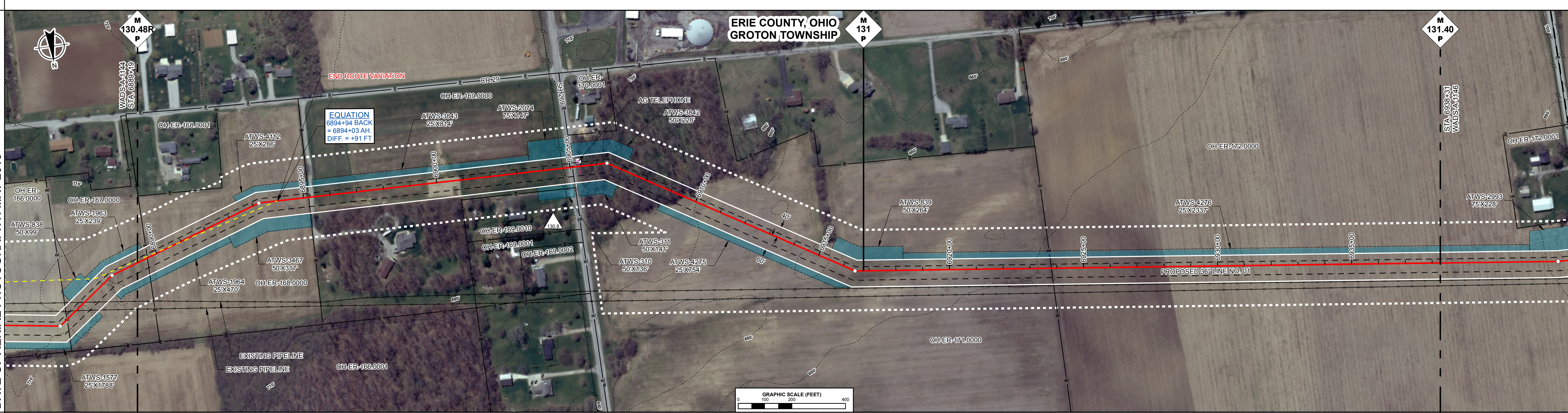
<b>RIGHT-OF-WAY</b>	OH-ER-167.0000 2.5 RODS 41 FT.	OH-ER-168.0000 39.5 RODS 651 FT.	OH-ER-169.0000 60.0 RODS 990 FT.	OH-ER-171.0000 113.3 RODS 1870 FT.	OH-ER-172.0000 87.9 RODS 1451 FT.
---------------------	--------------------------------------	--	--	--	---

<b>SURVEY DATA</b>	SURVEY COMPANY: FIELD BOOK: PAGES:
--------------------	--

<b>CLASS LOCATION</b>	CLASS 2
-----------------------	---------

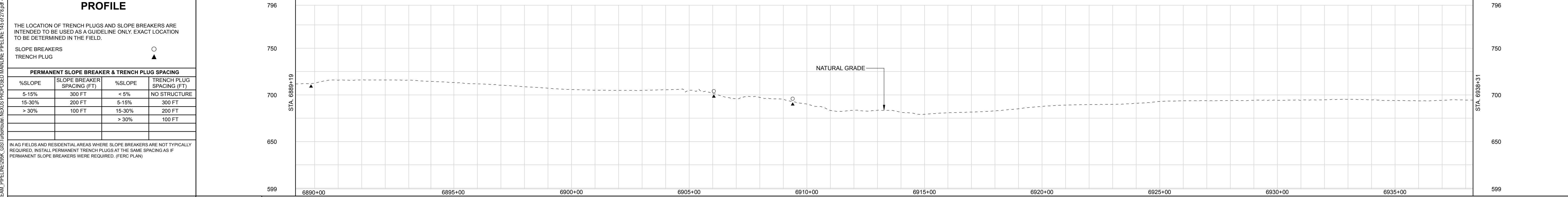
<b>PIPE MATERIAL</b>	PROJ. MOD. NUMBER: 130.8 DESCRIPTION: ATWS ADJUSTED DUE TO LANDOWNER REQUEST.
----------------------	--

<b>ALIGNMENT LEGEND</b>
PIPELINE MILEPOST PROPOSED NEXUS PIPELINE - NOV. 2015 ROUTE PROPOSED NEXUS PIPELINE INTERCONNECTING PIPELINE TO TGP CONSTRUCTION LIMIT STUDY CORRIDOR STAGING AREA WAREYARD PERMANENT ROW ADDITIONAL TEMPORARY WORKSPACE METERING & REGULATION STATION (M&R) SITE COMPRESSOR STATION SITE FACILITIES TEMPORARY WORKSPACE FACILITIES PERMANENT WORKSPACE AGRICULTURAL PEM WETLAND BOUNDARY DELINEATED WETLAND BOUNDARY DELINEATED WATERBODY BANK DELINEATED WATERBODY CENTERLINE APPROXIMATE WETLAND BOUNDARY APPROXIMATE WATERBODY BANK APPROXIMATE WATERBODY CENTERLINE PERMANENT ACCESS ROAD TEMPORARY ACCESS ROAD PROPERTY LINE CONTOUR MUNICIPALITY LINE FENCE FOREIGN PIPELINE POWERLINE WATER PIPELINE RAILROAD TRACK TELEPHONE LINE TEE TAP BLOW OFF VALVE TOWER HORIZONTAL DIRECTIONAL DRILL ENTRY/EXIT TANK WELL: GAS WATER OIL UNKNOWN
<b>DATE OF AERIAL PHOTOGRAPHY: MAY 2015</b>



<b>ENVIRONMENTAL DATA</b>	
---------------------------	--

<b>E &amp; S TYPICALS</b>	E&S TYPICALS WILL BE USED AS A PLAN AND WILL HAVE FURTHER INPUT FROM ENVIRONMENTAL INSPECTOR.
---------------------------	---



<b>LAND USE CLASSIFICATION</b>	<b>SOILS</b>
AG AGRICULTURAL OL OPEN LAND IC INDUSTRIAL/COMMERCIAL FW FOREST/WOODLAND R RESIDENTIAL OW OPEN WATER	LAND USE: AG R AG IC FW AG % SLOPE: <5% 5-15% <5% 5-15% <5% 5-15% <5%

<b>IG#</b>	DWG. NO.	DESCRIPTION	REV DSN CK	DESCRIPTION	ITEM	DESCRIPTION	QTY																																								
	REFERENCE DRAWINGS		REVISIONS		MATERIALS																																										
<table border="1"> <tr> <td colspan="2">ISSUED FOR FERC (08/2016)</td> <td colspan="2">ISSUED FOR FERC (02/2016)</td> <td colspan="2">ISSUED FOR FERC (11/2015)</td> <td colspan="2">ISSUED FOR FERC (11/2015)</td> </tr> <tr> <td colspan="2">ISSUED FOR P3 (03/2016)</td> <td colspan="2">ISSUED FOR FERC (02/2016)</td> <td colspan="2">ISSUED FOR FERC (11/2015)</td> <td colspan="2">ISSUED FOR FERC (11/2015)</td> </tr> <tr> <td colspan="2">ISSUED FOR FERC (02/2016)</td> <td colspan="2">ISSUED FOR FERC (11/2015)</td> <td colspan="2">ISSUED FOR FERC (11/2015)</td> <td colspan="2">ISSUED FOR FERC (11/2015)</td> </tr> <tr> <td colspan="2">ISSUED FOR FERC (11/2015)</td> <td colspan="2">ISSUED FOR FERC (11/2015)</td> <td colspan="2">ISSUED FOR FERC (11/2015)</td> <td colspan="2">ISSUED FOR FERC (11/2015)</td> </tr> <tr> <td colspan="2">ISSUED FOR FERC (11/2015)</td> <td colspan="2">ISSUED FOR FERC (11/2015)</td> <td colspan="2">ISSUED FOR FERC (11/2015)</td> <td colspan="2">ISSUED FOR FERC (11/2015)</td> </tr> </table>								ISSUED FOR FERC (08/2016)		ISSUED FOR FERC (02/2016)		ISSUED FOR FERC (11/2015)		ISSUED FOR FERC (11/2015)		ISSUED FOR P3 (03/2016)		ISSUED FOR FERC (02/2016)		ISSUED FOR FERC (11/2015)		ISSUED FOR FERC (11/2015)		ISSUED FOR FERC (02/2016)		ISSUED FOR FERC (11/2015)		ISSUED FOR FERC (11/2015)		ISSUED FOR FERC (11/2015)		ISSUED FOR FERC (11/2015)		ISSUED FOR FERC (11/2015)		ISSUED FOR FERC (11/2015)		ISSUED FOR FERC (11/2015)		ISSUED FOR FERC (11/2015)		ISSUED FOR FERC (11/2015)		ISSUED FOR FERC (11/2015)		ISSUED FOR FERC (11/2015)	
ISSUED FOR FERC (08/2016)		ISSUED FOR FERC (02/2016)		ISSUED FOR FERC (11/2015)		ISSUED FOR FERC (11/2015)																																									
ISSUED FOR P3 (03/2016)		ISSUED FOR FERC (02/2016)		ISSUED FOR FERC (11/2015)		ISSUED FOR FERC (11/2015)																																									
ISSUED FOR FERC (02/2016)		ISSUED FOR FERC (11/2015)		ISSUED FOR FERC (11/2015)		ISSUED FOR FERC (11/2015)																																									
ISSUED FOR FERC (11/2015)		ISSUED FOR FERC (11/2015)		ISSUED FOR FERC (11/2015)		ISSUED FOR FERC (11/2015)																																									
ISSUED FOR FERC (11/2015)		ISSUED FOR FERC (11/2015)		ISSUED FOR FERC (11/2015)		ISSUED FOR FERC (11/2015)																																									
<table border="1"> <tr> <td colspan="2">GENERAL NOTES:</td> <td colspan="2">ENGINEERING APPROVALS</td> <td colspan="2">WADS - CLYD NEXUS PROJECT PROPOSED 36" LINE NO. 01 ALIGNMENT SHEET</td> <td colspan="2">NEXUS GAS TRANSMISSION</td> </tr> <tr> <td colspan="2">1.) ALL STATIONING IS IN U.S. FEET.</td> <td colspan="2">DRAWN BY:</td> <td colspan="2">LOC. ERIE COUNTY, OHIO</td> <td colspan="2">YEAR: 2017</td> </tr> <tr> <td colspan="2">2.) CONTOUR LINES AND ELEVATIONS ARE IN U.S. FEET.</td> <td colspan="2">NAME</td> <td colspan="2">W.B.S.</td> <td colspan="2">Scale 1" = 200'</td> </tr> <tr> <td colspan="2"></td> <td colspan="2">SIGNATURE</td> <td colspan="2">DATE</td> <td colspan="2">REV. 3</td> </tr> <tr> <td colspan="2"></td> <td colspan="2">SIGNATURE</td> <td colspan="2">DATE</td> <td colspan="2">WADS-A-1145</td> </tr> </table>								GENERAL NOTES:		ENGINEERING APPROVALS		WADS - CLYD NEXUS PROJECT PROPOSED 36" LINE NO. 01 ALIGNMENT SHEET		NEXUS GAS TRANSMISSION		1.) ALL STATIONING IS IN U.S. FEET.		DRAWN BY:		LOC. ERIE COUNTY, OHIO		YEAR: 2017		2.) CONTOUR LINES AND ELEVATIONS ARE IN U.S. FEET.		NAME		W.B.S.		Scale 1" = 200'				SIGNATURE		DATE		REV. 3				SIGNATURE		DATE		WADS-A-1145	
GENERAL NOTES:		ENGINEERING APPROVALS		WADS - CLYD NEXUS PROJECT PROPOSED 36" LINE NO. 01 ALIGNMENT SHEET		NEXUS GAS TRANSMISSION																																									
1.) ALL STATIONING IS IN U.S. FEET.		DRAWN BY:		LOC. ERIE COUNTY, OHIO		YEAR: 2017																																									
2.) CONTOUR LINES AND ELEVATIONS ARE IN U.S. FEET.		NAME		W.B.S.		Scale 1" = 200'																																									
		SIGNATURE		DATE		REV. 3																																									
		SIGNATURE		DATE		WADS-A-1145																																									



