

SOURCE: USGS TOPOGRAPHIC QUADRANGLE, 1:24,000 SERIES

- 1 MILE POST
- PROPOSED PIPELINE VALVE (WIN CS)
- PROPOSED PIPELINE LAUNCHER
- PROPOSED ACCESS ROAD
- PROPOSED MAINLINE PIPELINE
- EXISTING PIPELINES
- PROPOSED COMPRESSOR STATION SITE
- PROPOSED WAREYARD
- EXISTING FACILITY
- COUNTY BOUNDARY
- PROPOSED TAP
- PROPOSED MAINLINE VALVE
- PROPOSED PIPELINE RECEIVER
- PROPOSED NEXUS PIPELINE - MAR 2016 ROUTE
- PROPOSED INTERCONNECTING PIPELINE
- PROPOSED M&R STATION
- NWI WETLAND
- USGS QUADRANGLE BOUNDARY

FOR INFORMATIONAL USE ONLY

REV	DSN	CHK	APP	DATE	DESCRIPTION

ENGINEERING APPROVALS				
DRAWN BY:	BID	CONSTRUCTION		

TITLE	SIGNATURE	DATE	SIGNATURE	DATE

**NEXUS GAS TRANSMISSION PROJECT**  
**PROPOSED PIPELINE**  
**NATIONAL WETLANDS INVENTORY**

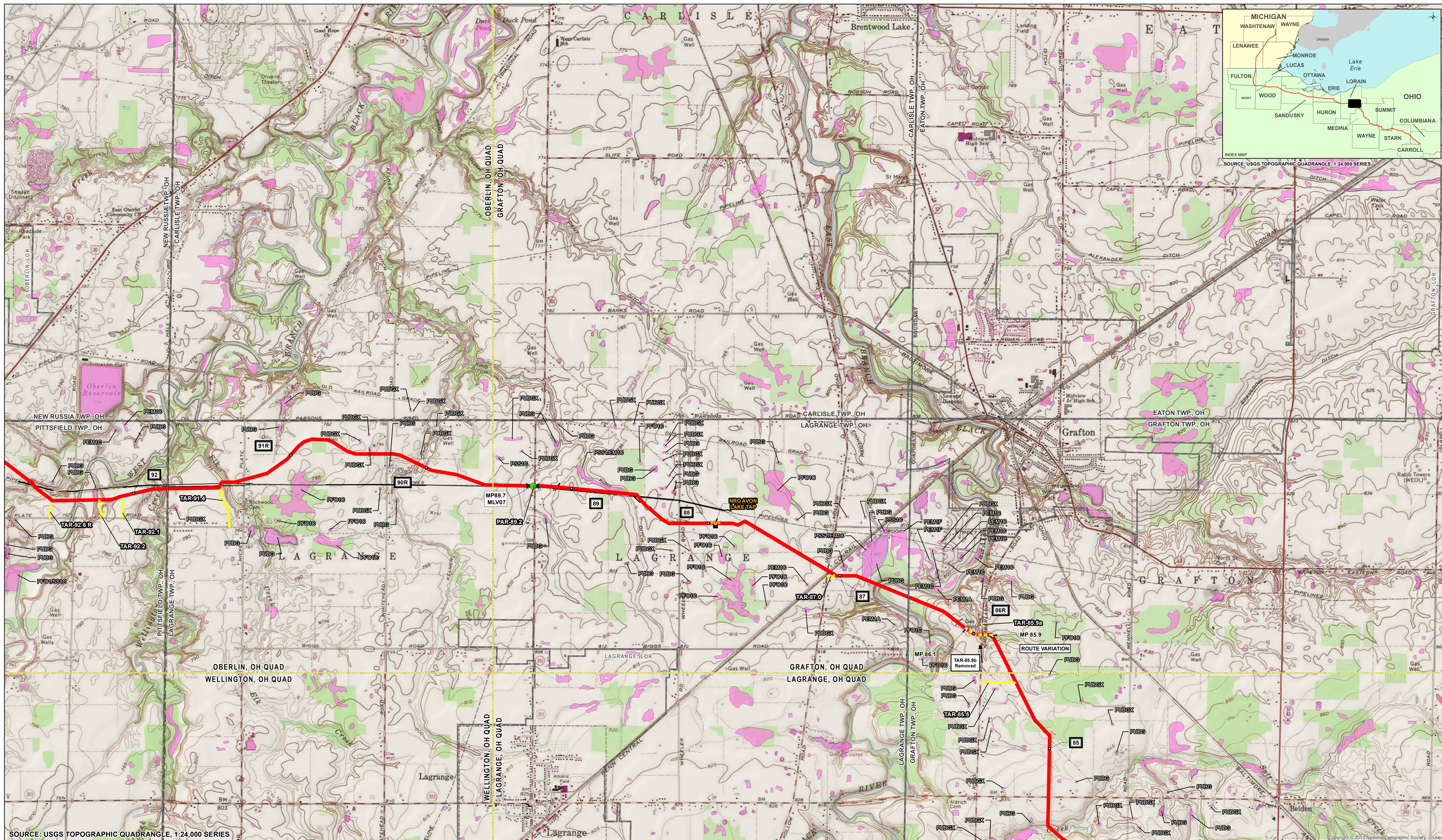
LOC.:

YEAR: 2015    W.O.

SCALE: 1" = 2,000'

DWG. 9 of 30

REV. D



SOURCE: USGS TOPOGRAPHIC QUADRANGLE, 1:24,000 SERIES

- 1 MILE POST
- PROPOSED PIPELINE VALVE (WIN CS)
- PROPOSED PIPELINE LAUNCHER
- PROPOSED ACCESS ROAD
- PROPOSED MAINLINE PIPELINE
- EXISTING PIPELINES
- PROPOSED COMPRESSOR STATION SITE
- PROPOSED WAREYARD
- EXISTING FACILITY
- COUNTY BOUNDARY
- PROPOSED TAP
- PROPOSED MAINLINE VALVE
- PROPOSED PIPELINE RECEIVER
- PROPOSED NEXUS PIPELINE - MAR 2016 ROUTE
- PROPOSED INTERCONNECTING PIPELINE
- PROPOSED M&R STATION
- NWI WETLAND
- USGS QUADRANGLE BOUNDARY

FOR INFORMATIONAL USE ONLY

2,000 1,000 0 2,000 4,000 FEET

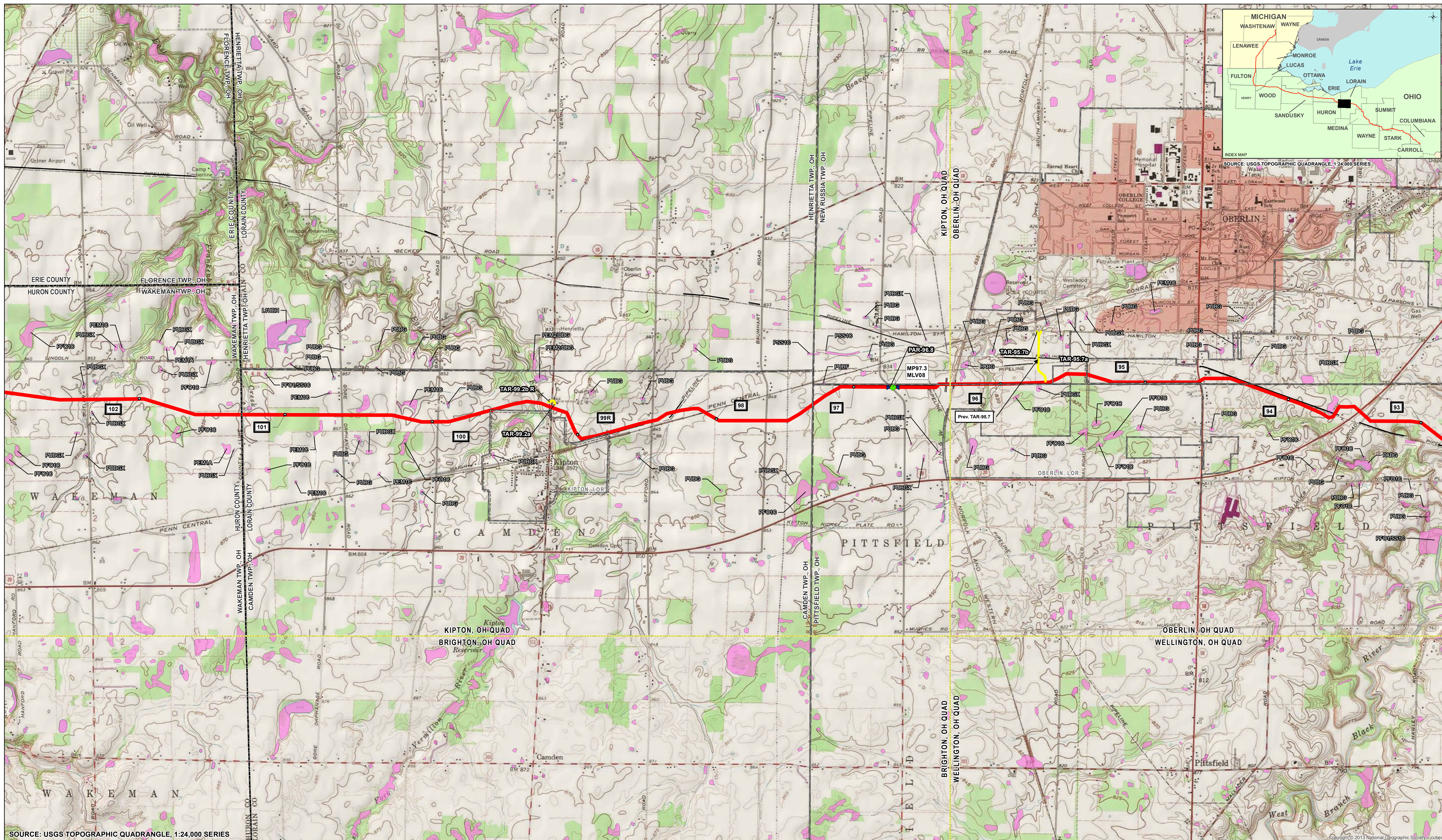
REV	DSN	CHK	APP	DATE	DESCRIPTION

ENGINEERING APPROVALS				
DRAWN BY:		BID		CONSTRUCTION

ENGINEERING APPROVALS				
DRAWN BY:		BID		CONSTRUCTION

NEXUS GAS TRANSMISSION PROJECT PROPOSED PIPELINE NATIONAL WETLANDS INVENTORY				
LOC.	YEAR: 2015	W.O.	SCALE: 1" = 2,000'	DWG. 10 of 30
				REV. D





SOURCE: USGS TOPOGRAPHIC QUADRANGLE, 1:24,000 SERIES

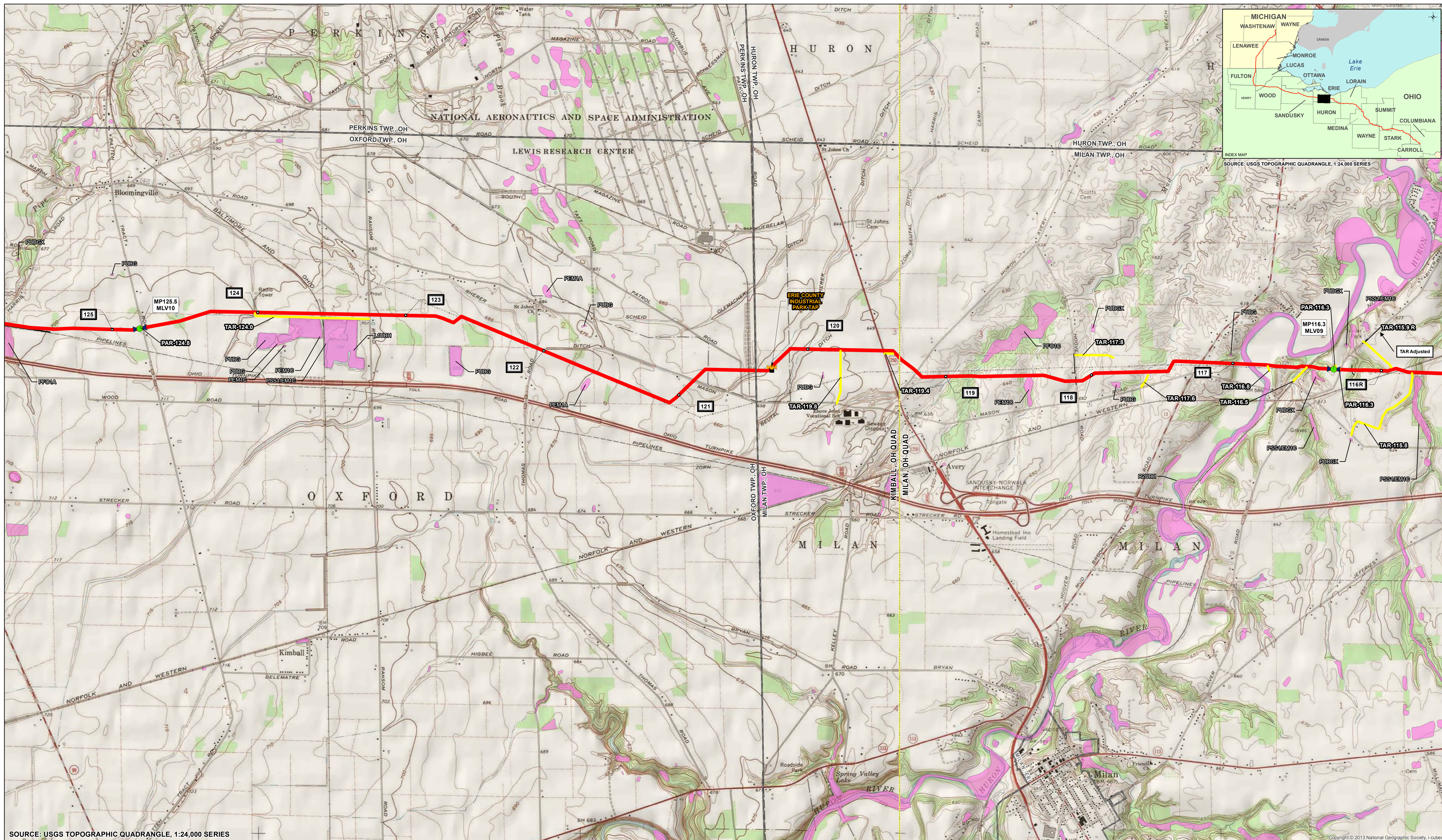
- 1 MILE POST
- PROPOSED PIPELINE VALVE (WIN CS)
- PROPOSED PIPELINE LAUNCHER
- PROPOSED ACCESS ROAD
- PROPOSED MAINLINE PIPELINE
- EXISTING PIPELINES
- PROPOSED COMPRESSOR STATION SITE
- PROPOSED WAREYARD
- EXISTING FACILITY
- COUNTY BOUNDARY
- PROPOSED TAP
- PROPOSED MAINLINE VALVE
- PROPOSED PIPELINE RECEIVER
- PROPOSED NEXUS PIPELINE - MAR 2016 ROUTE
- PROPOSED INTERCONNECTING PIPELINE
- PROPOSED M&R STATION
- NWI WETLAND
- USGS QUADRANGLE BOUNDARY

FOR INFORMATIONAL USE ONLY

REV	DSN	CHK	APP	DATE	DESCRIPTION

ENGINEERING APPROVALS				
DRAWN BY:		BID		CONSTRUCTION

NEXUS GAS TRANSMISSION PROJECT PROPOSED PIPELINE NATIONAL WETLANDS INVENTORY				
LOC.	YEAR: 2015	W.O.	SCALE: 1" = 2,000'	DWG. 11 of 30
				REV. D



SOURCE: USGS TOPOGRAPHIC QUADRANGLE, 1:24,000 SERIES

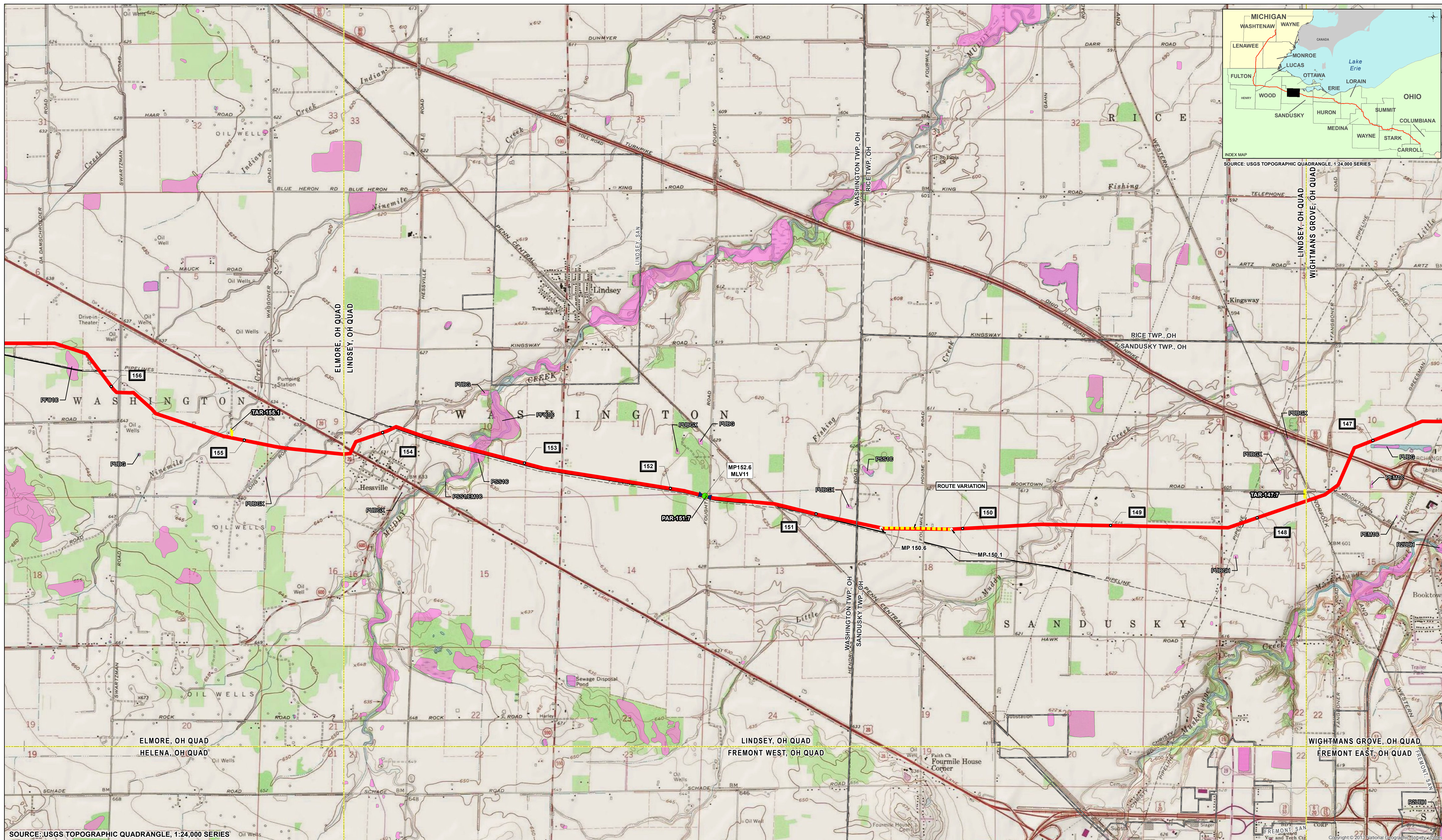
- 1 MILE POST
- PROPOSED PIPELINE VALVE (WIN CS)
- PROPOSED PIPELINE LAUNCHER
- PROPOSED ACCESS ROAD
- PROPOSED MAINLINE PIPELINE
- EXISTING PIPELINES
- PROPOSED COMPRESSOR STATION SITE
- PROPOSED WAREYARD
- EXISTING FACILITY
- COUNTY BOUNDARY
- PROPOSED TAP
- PROPOSED MAINLINE VALVE
- PROPOSED PIPELINE RECEIVER
- PROPOSED NEXUS PIPELINE - MAR 2016 ROUTE
- PROPOSED INTERCONNECTING PIPELINE
- PROPOSED M&R STATION
- NWI WETLAND
- USGS QUADRANGLE BOUNDARY

**FOR INFORMATIONAL USE ONLY**

REV	DSN	CHK	APP	DATE	DESCRIPTION

ENGINEERING APPROVALS			
DRAWN BY:		CONSTRUCTION	
TITLE	SIGNATURE	DATE	SIGNATURE

NEXUS GAS TRANSMISSION PROJECT PROPOSED PIPELINE NATIONAL WETLANDS INVENTORY				
LOC.				
YEAR: 2015	W.O.	SCALE: 1" = 2,000'	DWG. 13 of 30	REV. D



SOURCE: USGS TOPOGRAPHIC QUADRANGLE, 1:24,000 SERIES

MILE POST	PROPOSED PIPELINE VALVE (WIN CS)	PROPOSED PIPELINE LAUNCHER	PROPOSED ACCESS ROAD	PROPOSED MAINLINE PIPELINE	EXISTING PIPELINES	PROPOSED COMPRESSOR STATION SITE	PROPOSED WAREYARD	EXISTING FACILITY	COUNTY BOUNDARY
PROPOSED TAP	PROPOSED MAINLINE VALVE	PROPOSED PIPELINE RECEIVER	PROPOSED NEXUS PIPELINE - MAR 2016 ROUTE	PROPOSED INTERCONNECTING PIPELINE	PROPOSED M&R STATION	NW1 WETLAND	USGS QUADRANGLE BOUNDARY		

2,000 1,000 0 2,000 4,000 FEET

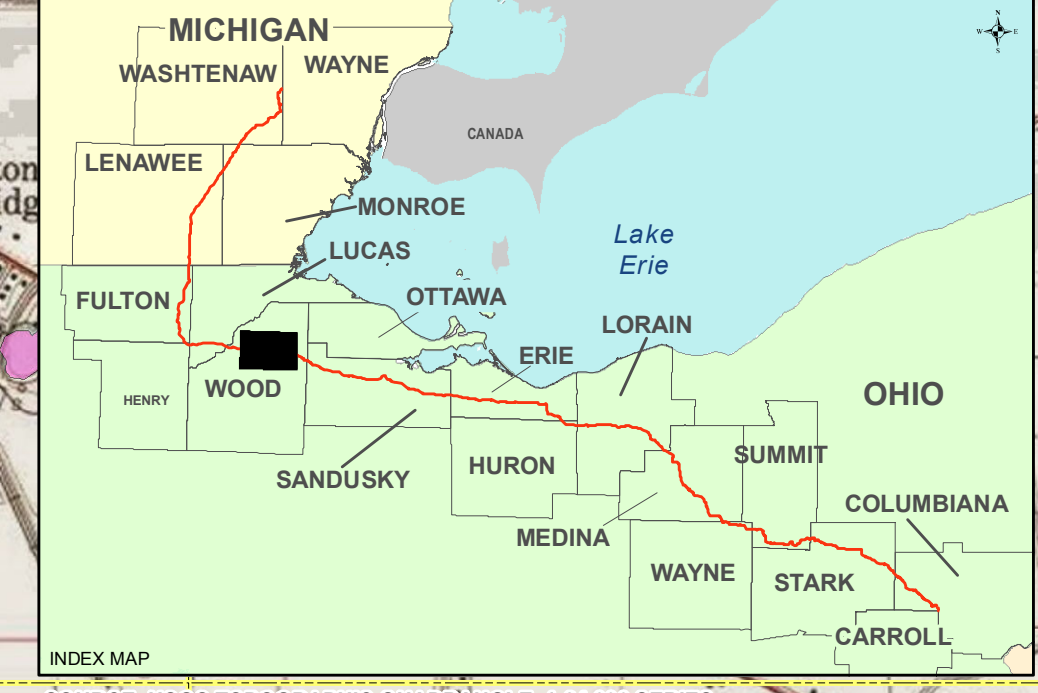
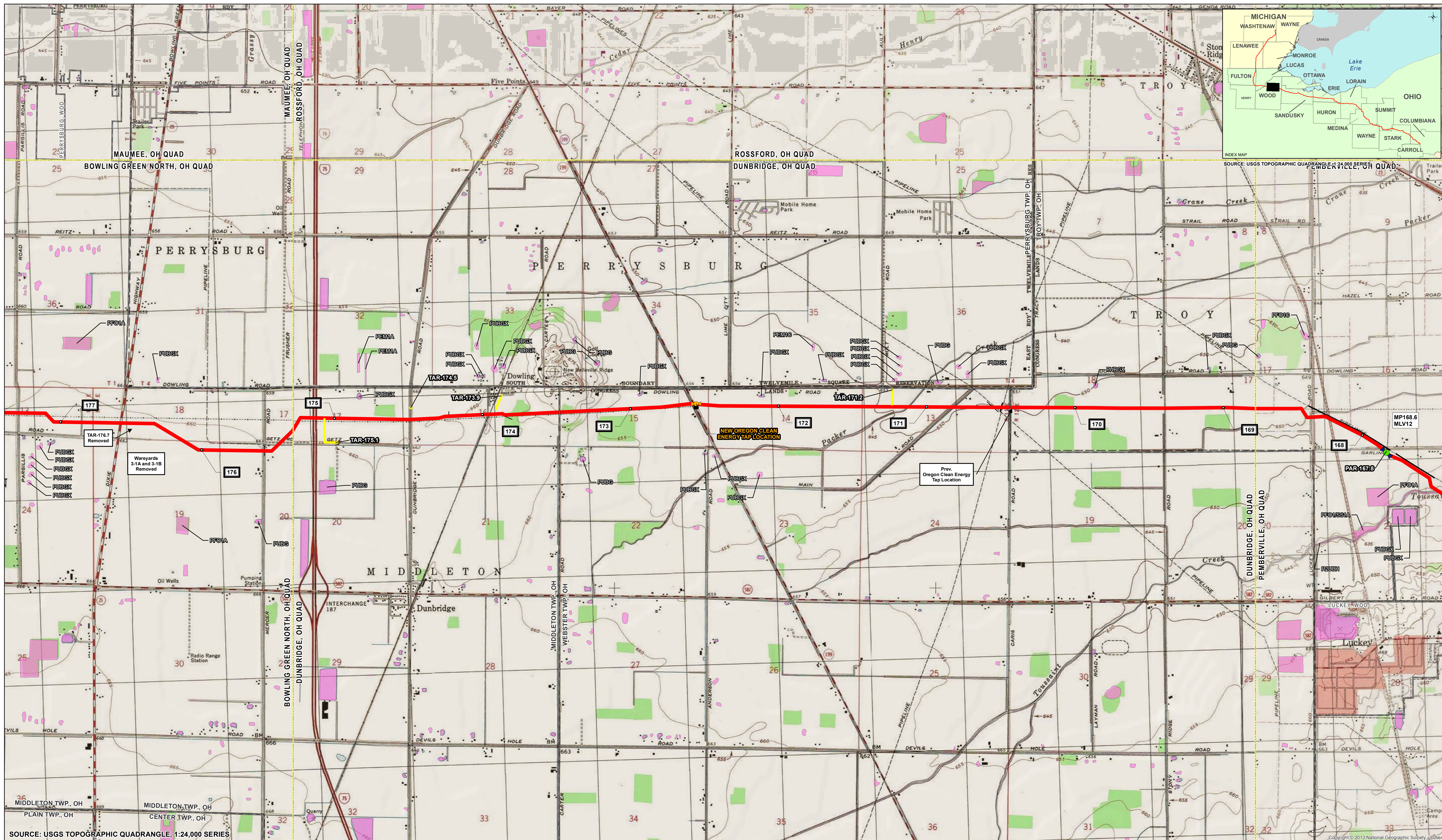
**FOR INFORMATIONAL USE ONLY**

REV	DSN	CHK	APP	DATE	DESCRIPTION

<b>FLUOR</b>	ENGINEERING APPROVALS			
	DRAWN BY:	BID	CONSTRUCTION	

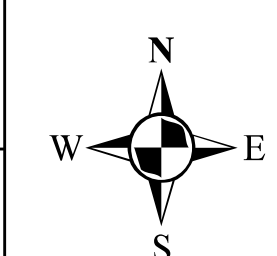
NEXUS GAS TRANSMISSION PROJECT PROPOSED PIPELINE NATIONAL WETLANDS INVENTORY			
LOC.	YEAR: 2015	W.O.	SCALE: 1" = 2,000'





SOURCE: USGS TOPOGRAPHIC QUADRANGLE, 1:24,000 SERIES

1 MILE POST	PROPOSED PIPELINE VALVE (WIN CS)	PROPOSED PIPELINE LAUNCHER	PROPOSED ACCESS ROAD	PROPOSED MAINLINE PIPELINE	EXISTING PIPELINES	PROPOSED COMPRESSOR STATION SITE	PROPOSED WAREYARD	EXISTING FACILITY	COUNTY BOUNDARY
PROPOSED TAP	PROPOSED MAINLINE VALVE	PROPOSED PIPELINE RECEIVER	PROPOSED NEXUS PIPELINE - MAR 2016 ROUTE	PROPOSED INTERCONNECTING PIPELINE	PROPOSED M&R STATION	NW1 WETLAND	USGS QUADRANGLE BOUNDARY		

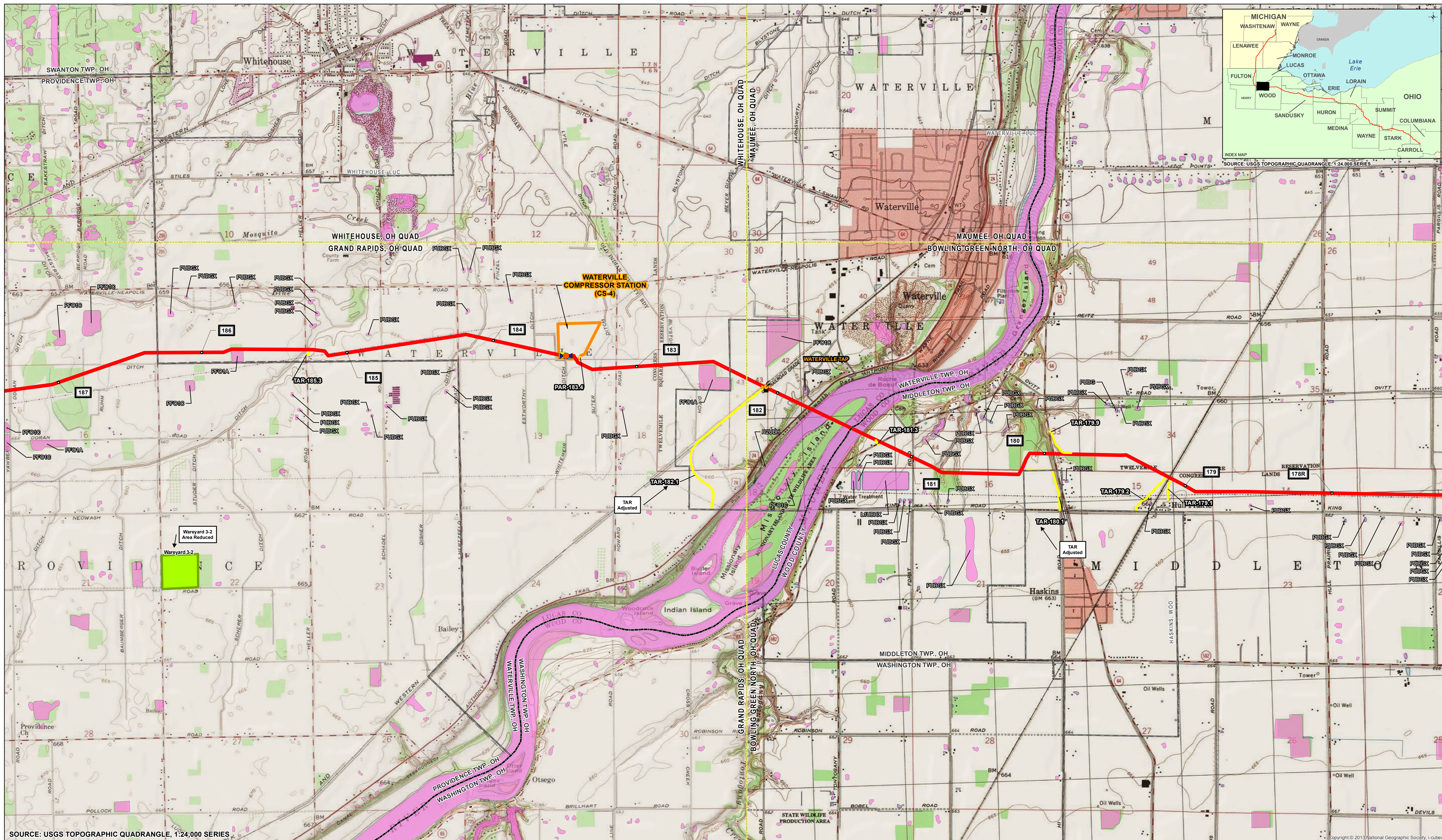


REV	DSN	CHK	APP	DATE	DESCRIPTION



ENGINEERING APPROVALS				
DRAWN BY:		BID		CONSTRUCTION

NEXUS GAS TRANSMISSION PROJECT PROPOSED PIPELINE NATIONAL WETLANDS INVENTORY				
LOC.				
YEAR: 2015	W.O.	SCALE: 1" = 2,000'	DWG. 18 of 30	REV. D



SOURCE: USGS TOPOGRAPHIC QUADRANGLE, 1:24,000 SERIES

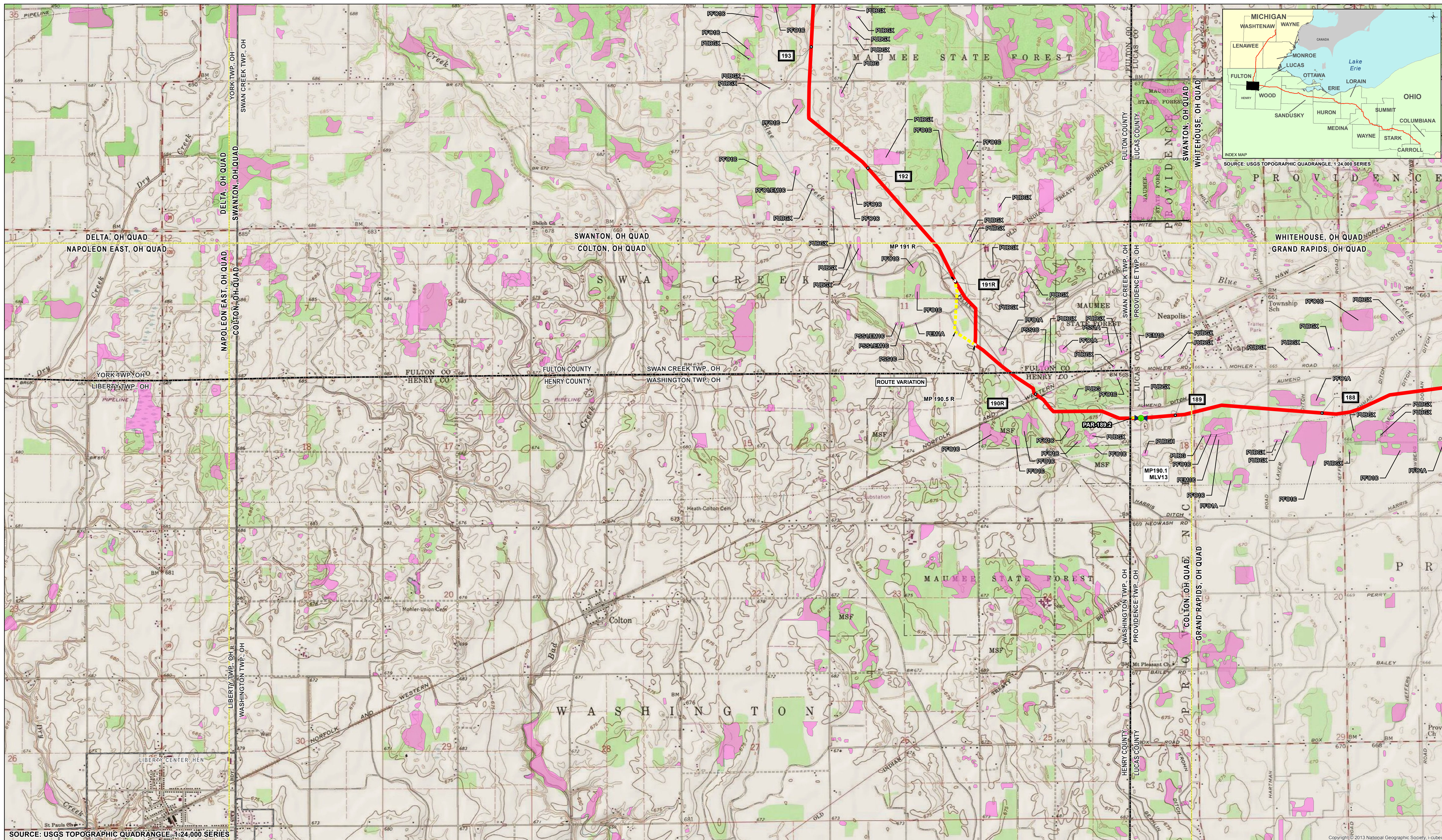
- 1 MILE POST
- PROPOSED PIPELINE VALVE (WIN CS)
- PROPOSED PIPELINE LAUNCHER
- PROPOSED ACCESS ROAD
- PROPOSED MAINLINE PIPELINE
- EXISTING PIPELINES
- PROPOSED COMPRESSOR STATION SITE
- PROPOSED WAREYARD
- EXISTING FACILITY
- COUNTY BOUNDARY
- PROPOSED TAP
- PROPOSED MAINLINE VALVE
- ▲ PROPOSED PIPELINE RECEIVER
- PROPOSED NEXUS PIPELINE - MAR 2016 ROUTE
- PROPOSED INTERCONNECTING PIPELINE
- PROPOSED M&R STATION
- NWI WETLAND
- USGS QUADRANGLE BOUNDARY

FOR INFORMATIONAL USE ONLY

REV	DSN	CHK	APP	DATE	DESCRIPTION

ENGINEERING APPROVALS				
DRAWN BY:		BID		CONSTRUCTION
TITLE	SIGNATURE	DATE	SIGNATURE	DATE

NEXUS GAS TRANSMISSION PROJECT PROPOSED PIPELINE NATIONAL WETLANDS INVENTORY				
LOC.				
YEAR: 2015	W.O.	SCALE: 1" = 2,000'	DWG.	REV. D



1 MILE POST    PROPOSED PIPELINE VALVE (WIN CS)    PROPOSED PIPELINE LAUNCHER    PROPOSED ACCESS ROAD    PROPOSED MAINLINE PIPELINE    EXISTING PIPELINES    PROPOSED COMPRESSOR STATION SITE    PROPOSED WAREYARD    EXISTING FACILITY    COUNTY BOUNDARY

PROPOSED TAP    PROPOSED MAINLINE VALVE    PROPOSED PIPELINE RECEIVER    PROPOSED NEXUS PIPELINE - MAR 2016 ROUTE    PROPOSED INTERCONNECTING PIPELINE    PROPOSED M&R STATION    NWI WETLAND    USGS QUADRANGLE BOUNDARY

FOR INFORMATIONAL USE ONLY

2,000 1,000 0 2,000 4,000 FEET

N  
W E  
S

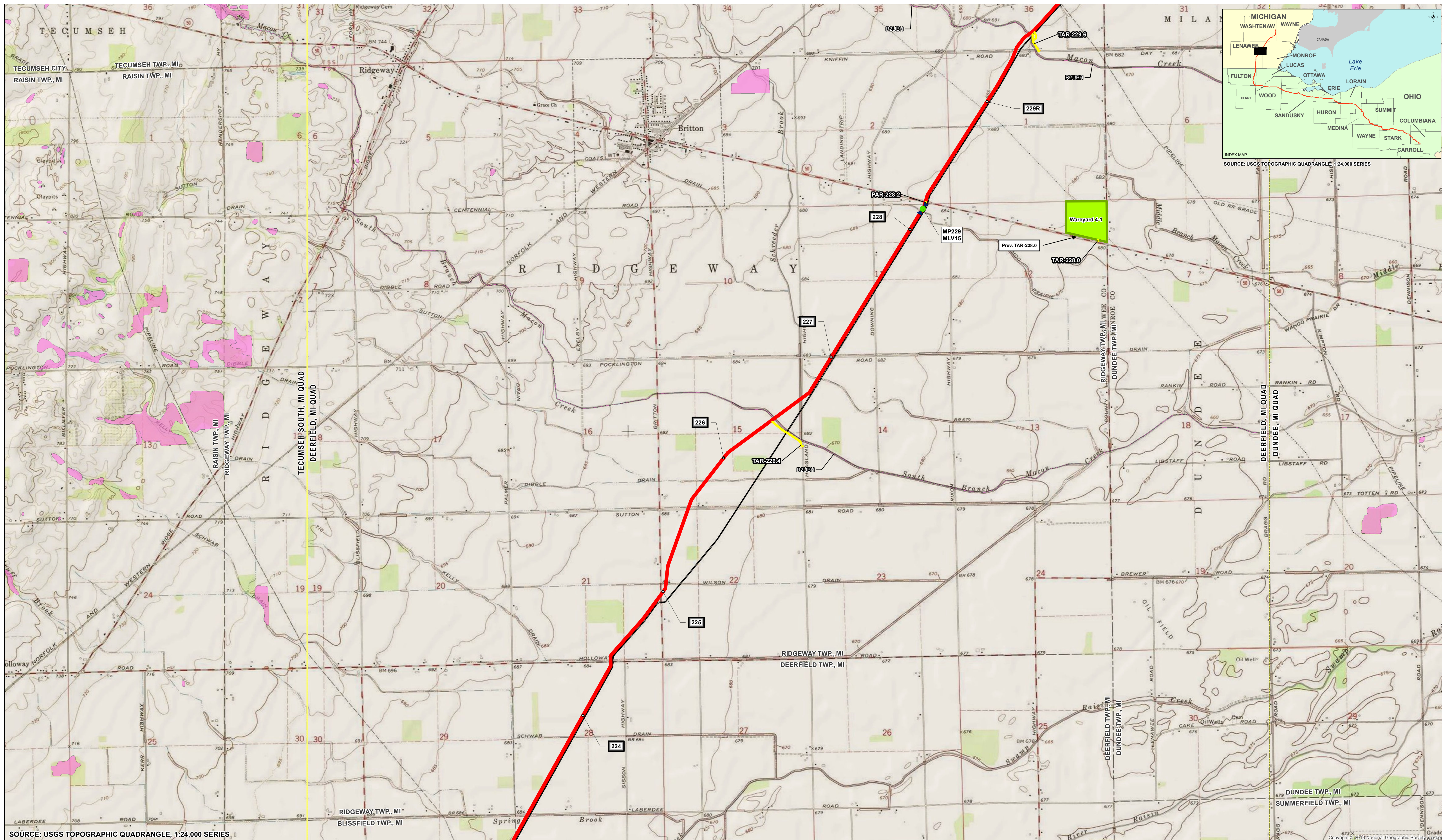
REV	DSN	CHK	APP	DATE	DESCRIPTION

ENGINEERING APPROVALS				
DRAWN BY:	BID	CONSTRUCTION		

NEXUS GAS TRANSMISSION PROJECT PROPOSED PIPELINE NATIONAL WETLANDS INVENTORY				
LOC.				
YEAR:	2015	W.O.	SCALE:	1" = 2,000'

DWG.		20 of 30		REV. D	





SOURCE: USGS TOPOGRAPHIC QUADRANGLE, 1:24,000 SERIES

1 MILE POST	PROPOSED PIPELINE VALVE (WIN CS)	PROPOSED PIPELINE LAUNCHER	PROPOSED ACCESS ROAD	PROPOSED MAINLINE PIPELINE	EXISTING PIPELINES	PROPOSED COMPRESSOR STATION SITE	PROPOSED WEYARD	EXISTING FACILITY	COUNTY BOUNDARY
PROPOSED TAP	PROPOSED MAINLINE VALVE	PROPOSED PIPELINE RECEIVER	PROPOSED NEXUS PIPELINE - MAR 2016 ROUTE	PROPOSED INTERCONNECTING PIPELINE	PROPOSED M&R STATION	NW1 WETLAND	USGS QUADRANGLE BOUNDARY		

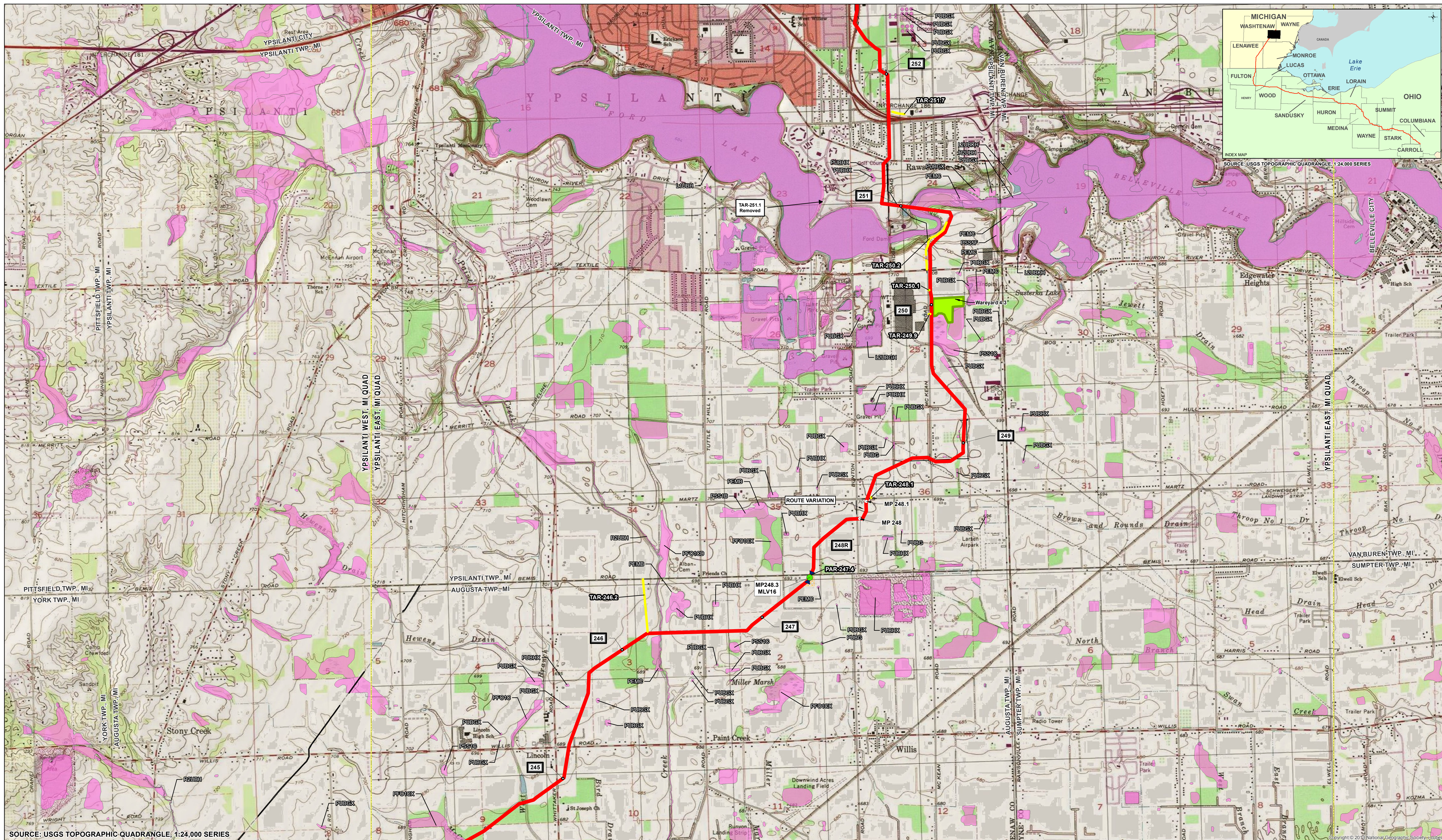
2,000 1,000 0 2,000 4,000 FEET

**FOR INFORMATIONAL USE ONLY**

REV	DSN	CHK	APP	DATE	DESCRIPTION

DRAWN BY:	ENGINEERING APPROVALS			
	BID	CONSTRUCTION		

NEXUS GAS TRANSMISSION PROJECT PROPOSED PIPELINE NATIONAL WETLANDS INVENTORY				
LOC.				
YEAR: 2015	W.O.	SCALE: 1" = 2,000'	DWG. 26 of 30	REV. D



SOURCE: USGS TOPOGRAPHIC QUADRANGLE, 1:24,000 SERIES

1 MILE POST	PROPOSED PIPELINE VALVE (WIN CS)	PROPOSED PIPELINE LAUNCHER	PROPOSED ACCESS ROAD	PROPOSED MAINLINE PIPELINE	EXISTING PIPELINES	PROPOSED COMPRESSOR STATION SITE	PROPOSED WAREYARD	EXISTING FACILITY	COUNTY BOUNDARY
PROPOSED TAP	PROPOSED MAINLINE VALVE	PROPOSED PIPELINE RECEIVER	PROPOSED NEXUS PIPELINE - MAR 2016 ROUTE	PROPOSED INTERCONNECTING PIPELINE	PROPOSED M&R STATION	NW1 WETLAND	USGS QUADRANGLE BOUNDARY		

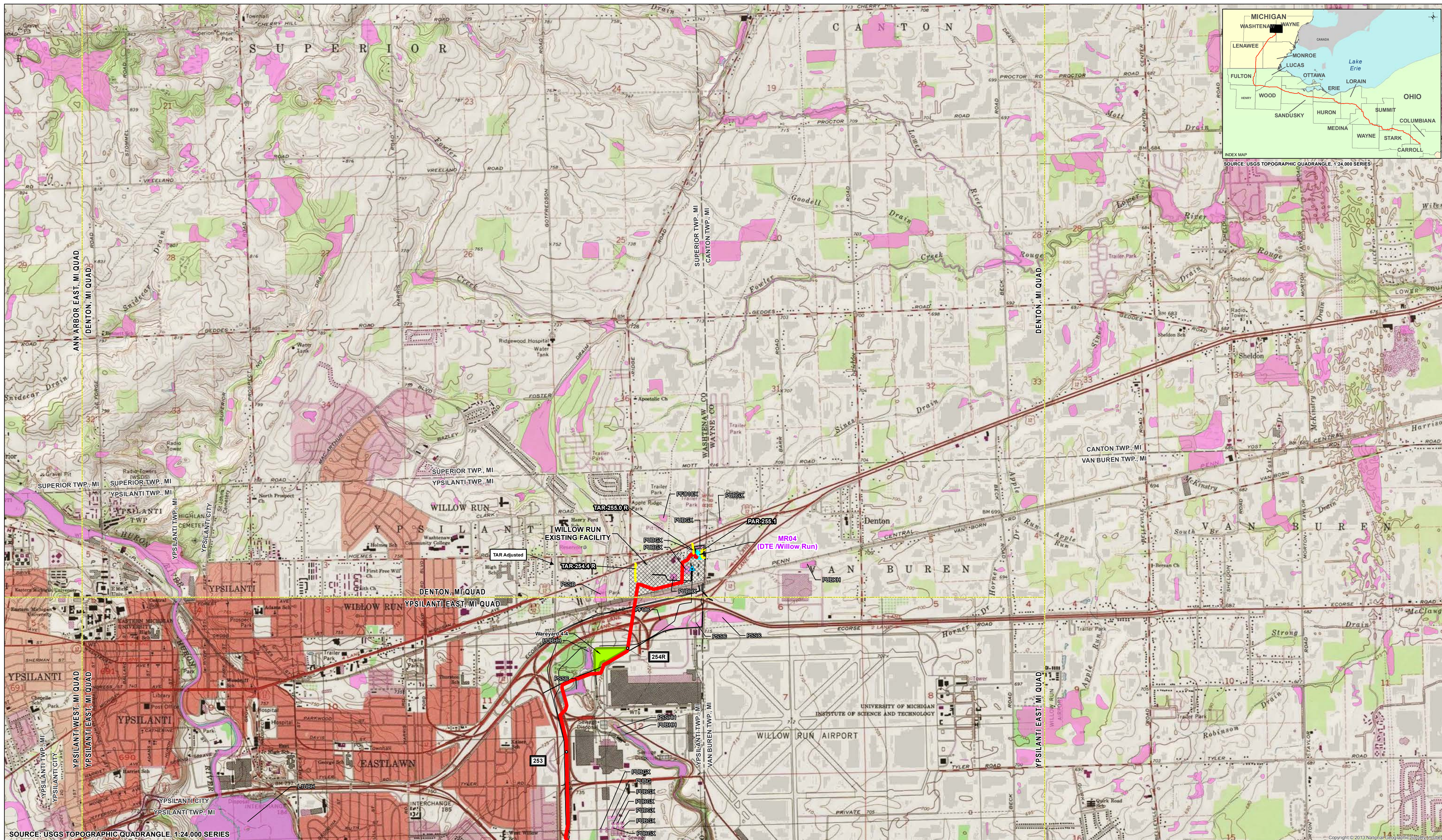
2,000 1,000 0 2,000 4,000 FEET

**FOR INFORMATIONAL USE ONLY**

REV	DSN	CHK	APP	DATE	DESCRIPTION

ENGINEERING APPROVALS				
DRAWN BY:	BID	CONSTRUCTION		

NEXUS GAS TRANSMISSION PROJECT PROPOSED PIPELINE NATIONAL WETLANDS INVENTORY				
LOC.	YEAR: 2015	W.O.	SCALE: 1" = 2,000'	DWG. 29 of 30
				REV. D



SOURCE: USGS TOPOGRAPHIC QUADRANGLE, 1:24,000 SERIES

- 1 MILE POST
- ▶ PROPOSED PIPELINE VALVE (WIN CS)
- PROPOSED PIPELINE LAUNCHER
- PROPOSED ACCESS ROAD
- PROPOSED MAINLINE PIPELINE
- EXISTING PIPELINES
- PROPOSED COMPRESSOR STATION SITE
- PROPOSED WAREYARD
- EXISTING FACILITY
- COUNTY BOUNDARY
- ▶ PROPOSED TAP
- ▶ PROPOSED MAINLINE VALVE
- ▲ PROPOSED PIPELINE RECEIVER
- PROPOSED NEXUS PIPELINE - MAR 2016 ROUTE
- PROPOSED INTERCONNECTING PIPELINE
- PROPOSED M&R STATION
- NWI WETLAND
- USGS QUADRANGLE BOUNDARY

FOR INFORMATIONAL USE ONLY

REV	DSN	CHK	APP	DATE	DESCRIPTION

DRAWN BY:	ENGINEERING APPROVALS			
	BID	CONSTRUCTION		
TITLE	SIGNATURE	DATE	SIGNATURE	DATE

NEXUS GAS TRANSMISSION PROJECT PROPOSED PIPELINE NATIONAL WETLANDS INVENTORY				
LOC.	YEAR: 2015	W.O.	SCALE: 1" = 2,000'	DWG. 30 of 30
				REV. D